

ARGCO



ALLIED RUBBER & GASKET COMPANY

FIBERGLASS ROPE & TAPE

TADPOLE TAPE

FIBERGLASS GASKETS

CERAMIC FIBERS

CERAMIC ROPE

HIGH TEMPERATURE PUTTY

FIRESIDE & WATERSIDE KITS

CB GASKETS & PARTS

BOILER TILE

FLUE BRUSHES

TOPOG-E MOLDED RUBBER GASKETS

SPIRAL WOUND GASKETS

DIE-CUT BOILER GASKETS

MC DONNELL MILLER GASKETS

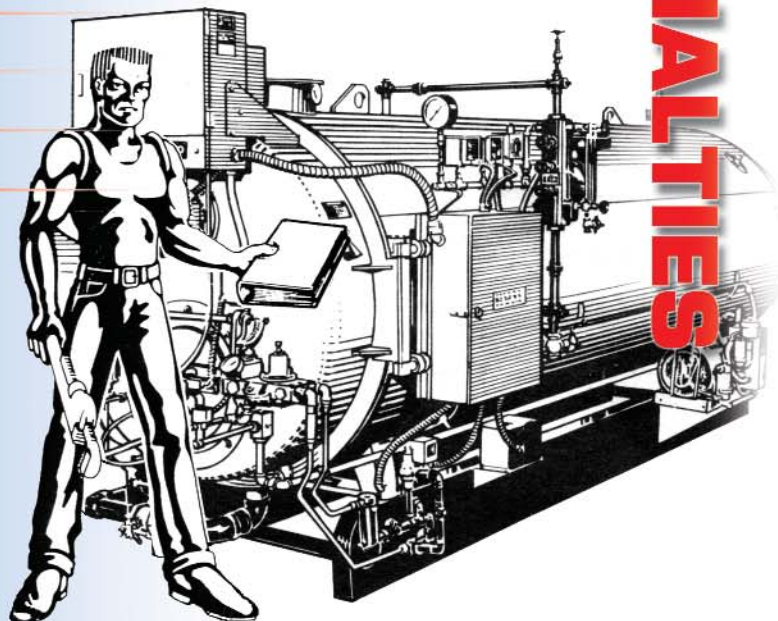
FLANGE GASKETS

NUT, BOLT & GASKET SETS

CUSTOM GASKETS

SHEET PACKING MATERIAL

COMPRESSION PACKING



GASKET & BOILER SPECIALTIES

800-854-1015



www.argco.com

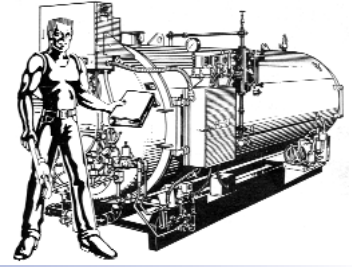
REVISED
JANUARY
2007



ARGCO

SINCE 1981

BOILER SPECIALTIES



1000° FIBERGLASS ROPE & TAPE

1-A FIBERGLASS ROPE



Knitted fiberglass rope offers the advantages of economy with more consistency and workability without sacrificing any of the physical, chemical or high temperature characteristics.

1000° F - available high density or low density.

- **High Density** is more firm, dense material that resembles twisted rope.
- **Low Density** is soft and easily compressible for gasketing, caulking for oven and furnace doors and expansion joints.



- Continuous protection to 1000° F (538° C)
- Non-asbestos
- Lightweight
- Strong & safe
- Abrasion resistant
- Low irritation factor
- Maximum flexibility
- Chemical resistant
- Specified for use by military
- Aluminized and wire inserted available

Call for quotes on square dry packing, vermiculite coated, and 2300°F temp. ropes.

1-B 1000° PLAIN FIBERGLASS TAPE



Applications: pipe wrap, gasketing, expansion joints, heat shields

- Special sizes available
- Wire inserted & pressure sensitive available
- Government specification HH-P-0031

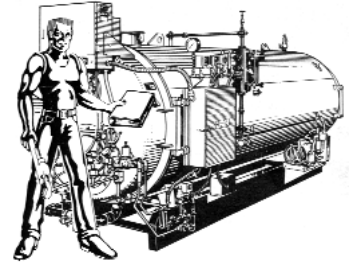
Call for quotes on vermiculite coated, PTFE impregnated, pressure sensitive adhesive and 2300° temp. fiberglass tapes.



ARGCO

SINCE 1981

BOILER SPECIALTIES



1000° FIBERGLASS TAPE

2-A PLAIN FIBERGLASS TAPE BOLT HOLE (drop warp)



Continuous protection at 1000° F.

Applications: pipe wrap, gasketing, expansion joints, heat shields

- Special sizes available
- Government spec. HH-P-003 I

2-B WINDOW TAPE



Manufactured from textured fiberglass yarns. It contains no compounds, cement or wire. Temperature rating of 1000° F.

Easy to wrap, takes a radius of 90° F without buckling, and because of its cellular knitted construction, it is more durable under abrasive conditions and provides better insulating properties.

TADPOLE TAPE

3-C 1000° FIBERGLASS TADPOLE TAPE

For boiler door and oven door seals

- Special sizes available
- Government spec. HH-P-003 I



1000° F (100 ft. rolls)

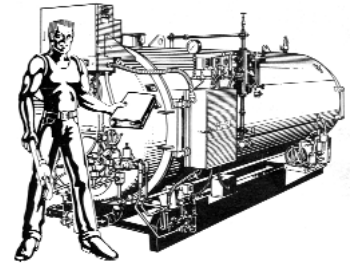
Available plain and rubberized.

Call for quotes on wire inserted, folded, dry-stitched, PTFE tape, PTFE impregnated, vermiculite coated and 2300° temp. tadpole tapes.



ARGCO
SINCE 1981

BOILER SPECIALTIES



FIBERGLASS GASKETS

Fabric made from texturized fiberglass yarn coated and impregnated with a white rubber compound. Used where rough or uneven flanges need a sealing material.

Temperature rating: 300° F to 550° F.

Available with brass wire insert for additional strength and density when fabricated into boiler gaskets, groove packing, tapes, etc.

3-A FIBERGLASS WIRE INSERTED HANDHOLE GASKETS

Handhole gaskets manufactured from texturized fiberglass yarns twisted with a brass wire then coated with a white rubber compound.

•3/4", 5/8", 1/2" flange sizes

•Temperature rating: 300° F to 550° F

•Available PTFE coated



3-B FIBERGLASS WIRE INSERTED MANHOLE GASKETS

Manhole gaskets manufactured from texturized fiberglass yarns twisted with a brass wire then coated with a white rubber compound.

•1" and 1-1/4" flange sizes

•Temp 300° F to 550° F

•Available PTFE coated



3-C 2300° CERAMIC FIBER LD BOARD

(Vacuum Form or Hot Face)

Ideal for furnace, boiler duct and stack lining due to its low thermal conductivity and low heat storage allowing shorter cycle times and quicker access for maintenance.

3-D 1900° MINERAL WOOL BLOCK

(for backup only)

Manufactured with fibers that are bonded and preformed into insulating board products. Mineral wool insulation provides superior fire-resistance.

3-D MOLDABLE, HIGH TEMP PUTTY

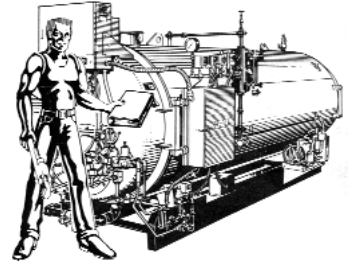
11-3/4 oz. caulking tube





ARGCO
SINCE 1981

BOILER SPECIALTIES



HIGH TEMPERATURE MATERIALS

A proven major problem solver for heat-intensive industries. Ceramic fiber can be baled as bulk, air-layered into a blanket, folded into modules, converted into boards, die-cut into gaskets, twisted into yarns, woven into rope and cloth, and blended into liquid binders for coatings and cements.

Used in heat treatment furnaces in the metals industry, process units in the petrochemical industry, kilns in the ceramic industry, boilers in the utilities industry, and fire protection products.

Ceramic fiber has been successful because it is...

- Cost effective
- Low thermal conductivities
- Outstanding electrical resistivity
- Excellent resistance to thermal shock
- Excellent insulating properties
- Low heat storage
- Good acoustical properties
- 2300° F maximum temperature rating

4-A CERAMIC FIBER BLANKETS



STANDARD DIMENSIONS: 25' X 2'
6 lb. and 8 lb.

4-B CERAMIC FIBER STRIPS

- 6 lb. and 8 lb. available in several sizes:
- 1/2" thick x 1" wide x 25' long
 - 1/2" thick x 2" wide x 25' long
 - 1" thick x 2" wide x 25' long
 - 1-1/2" thick x 2" wide x 25' long
 - 1" thick x 3" wide x 25' long
 - 1-1/2" thick x 3" wide x 25' long

4-C SPRAY ADHESIVE

High performance aerosol spray adhesive for permanent or temporary bond.

16 oz. can



4-D 2000° CERAMIC FIBER ROPE

- Non-asbestos
- Excellent high temperature seals & gaskets
- Excellent thermal shock & corrosion resistance
- 2300° F temperature rating
- Tapes and other textiles available





ARGCO

FIRESIDE & WATERSIDE KITS

5-A CB FIRESIDE KITS

| CB 15-40 HP/36" diameter part #15-20-200 • CB#880-213 | | |
|--|---------|--------------------------------------|
| qty | ref# | description |
| 3 | 32-442 | tadpole head gasket |
| 1 | 32-495 | 1/32" burner drawer gasket |
| 1 | 32-498 | 1/8" burner housing to head gasket |
| 1 | 32-444 | tadpole burner housing to inner door |
| 1 | 32-443 | tadpole dry oven door |
| 1 | 853-394 | 38" tadpole tape front baffle |
| 1 | 853-924 | 36" 1-1/2" rope rear baffle |
| 25 | 841-507 | fastener |
| 50 | 841-551 | rivets |

| CB 50-100 HP/48" diameter (old) part #15-20-202 • CB#880-214 | | |
|---|---------|--------------------------------------|
| qty | ref# | description |
| 3 | 32-516 | tadpole head gasket |
| 1 | 32-553 | 1/32" burner drawer gasket |
| 1 | 32-567 | 1/16" burner housing to head gasket |
| 1 | 32-517 | tadpole burner housing to inner door |
| 1 | 32-518 | tadpole dry oven door |
| 1 | 853-394 | 50" tadpole tape front baffle |
| 1 | 853-924 | 48" 1-1/2" rope rear baffle |
| 25 | 841-507 | fastener |
| 50 | 841-551 | rivets |

| CB 250-350 HP/78" diameter part #15-20-208 • CB#880-217 | | |
|--|---------|--------------------------------------|
| qty | ref# | description |
| 3 | 32-899 | tadpole head gasket |
| 1 | 32-927 | 1/16" burner drawer gasket |
| 1 | 853-3 | 72" rr tube burner support front hd. |
| 1 | 32-928 | 1/8" burner housing to inner door |
| 1 | 32-898 | tadpole dry oven door |
| 1 | 853-394 | 80" tadpole tape front baffle |
| 1 | 853-924 | 78" 1-1/2" rope rear baffle |
| 25 | 841-507 | fastener |
| 50 | 841-551 | rivets |

| CB 125-200 HP/60" diameter part #15-20-206 • CB#880-216 | | |
|--|---------|--------------------------------------|
| qty | ref# | description |
| 3 | 32-105 | tadpole head gasket |
| 1 | 32-605 | 1/32" burner drawer gasket |
| 1 | 32-603 | 1/16" burner housing to head gasket |
| 1 | 32-109 | tadpole burner housing to inner door |
| 1 | 32-106 | tadpole dry oven door |
| 1 | 853-394 | 62" tadpole tape front baffle |
| 1 | 853-924 | 60" 1-1/2" rope rear baffle |
| 25 | 841-507 | fastener |
| 50 | 841-551 | rivets |

| CB 400-800 HP/96" diameter part #15-20-210 • CB#880-218 | | |
|--|---------|--------------------------------------|
| qty | ref# | description |
| 3 | 32-901 | tadpole head gasket |
| 1 | 32-979 | 1/16" burner drawer gasket |
| 1 | 853-3 | 96" rr tube burner support front hd. |
| 1 | 32-980 | 1/8" tadpole burner house/inner door |
| 1 | 32-993 | tadpole dry oven door |
| 1 | 853-394 | 98" tadpole tape front baffle |
| 1 | 853-924 | 98" 1-1/2" rope rear baffle |
| 25 | 841-507 | fastener |
| 50 | 841-551 | rivets |

| CB 50-100 HP/48" diameter (new) part #15-20-204 • CB#880-215 | | |
|---|---------|--------------------------------------|
| qty | ref# | description |
| 3 | 32-516 | tadpole head gasket |
| 1 | 32-605 | 1/32" burner drawer gasket |
| 1 | 853-3 | 72" rr tube burner support front hd. |
| 1 | 32-2332 | tadpole burner housing to inner door |
| 1 | 32-2333 | tadpole dry oven door |
| 1 | 853-394 | 50" tadpole tape front baffle |
| 1 | 853-924 | 48" 1-1/2" rope rear baffle |
| 25 | 841-507 | fastener |
| 50 | 841-551 | rivets |



5-B LE Fireside Boiler Kits

- 60" boiler kit (880-782) 15-20-260
- 78" boiler kit (880-655) 15-20-251
- 96" boiler kit (880-656) 15-20-252

5-C CB WATERSIDE KITS

| NEO/EPDM Gasket TOPOG-E CB 15-40 HP/36" dia. part #15-20-101 • CB#880-204 | | | |
|--|---------|-------------------------|--------------------------|
| qty | ref# | size | description |
| 6 | 853-934 | 2-3/4" x 3-1/2" OB | handhole gasket |
| 2 | 853-268 | 150-14 McDonnell Miller | water column head gasket |

| Spirotallic Gasket • Non-Asbestos (0-999 psi) part #15-20-102 • CB#880-205 | | | |
|---|---------|-------------------------|--------------------------|
| qty | ref# | size | description |
| 7 | 853-191 | 3-9/32" x 4-17/32" OB | handhole gasket |
| 2 | 853-268 | 150-14 McDonnell Miller | water column head gasket |

| Spirotallic Gasket • Non-Asbestos (0-999 psi) part #15-20-104 • CB#880-206 | | | |
|---|---------|-------------------------|--------------------------|
| qty | ref# | size | description |
| 6 | 853-177 | 2-27/32" x 3-19/32" OB | handhole gasket |
| 2 | 853-268 | 150-14 McDonnell Miller | water column head gasket |

| NEO/EPDM Gasket TOPOG-E CB 15-100 HP/48" dia. part #15-20-111 • CB#880-209 | | | |
|---|---------|-------------------------|--------------------------|
| qty | ref# | size | description |
| 7 | 853-935 | 3-1/4" x 4-1/2" OB | handhole gasket |
| 2 | 853-268 | 150-14 McDonnell Miller | water column head gasket |

| Spirotallic Gasket • Non-Asbestos- (0-999psi) part #15-20-112 • CB#880-210 | | | |
|---|---------|----------------------------|--------------------------|
| qty | ref# | size | description |
| 1 | 853-192 | 11" x 15" x 15/16" x .175E | manhole gasket |
| 6 | 853-191 | 3-9/32" x 4-17/32" OB | handhole gasket |
| 2 | 853-268 | 150-14 McDonnell Miller | water column head gasket |

| NEO/EPDM Gasket TOPOG-E CB 125-800 HP/60-96" dia. part #15-20-117 • CB#880-212 | | | |
|---|---------|-------------------------------|--------------------------|
| qty | ref# | size | description |
| 1 | 853-936 | 11 x 15" x 1-1/4" x 1/4" oval | manhole gasket |
| 6 | 853-935 | 3-1/4" x 4-1/2" OB | handhole gasket |
| 2 | 853-268 | 150-14 McDonnell Miller | water column head gasket |



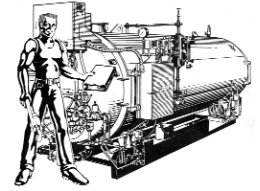
"CB" and "Clever Brooks" are registered trademarks of the Cleaver-Brooks division of Aqua-Chem, Inc. The products described herein are not manufactured or authorized by Cleaver-Brooks, nor is ARGCO in any way associated or affiliated with Brooks or Cleaver-Brooks or Aqua-Chem, Inc.



ARGCO

SINCE 1981

BOILER SPECIALTIES



6-A CB BOILER GASKETS & PARTS

"CB" and "Clever Brooks" are registered trademarks of the Cleaver-Brooks division of Aqua-Chem, Inc. The products described herein are not manufactured or authorized by Cleaver-Brooks, nor is ARGCO in any way associated or affiliated with Brooks or Cleaver-Brooks or Aqua-Chem, Inc.

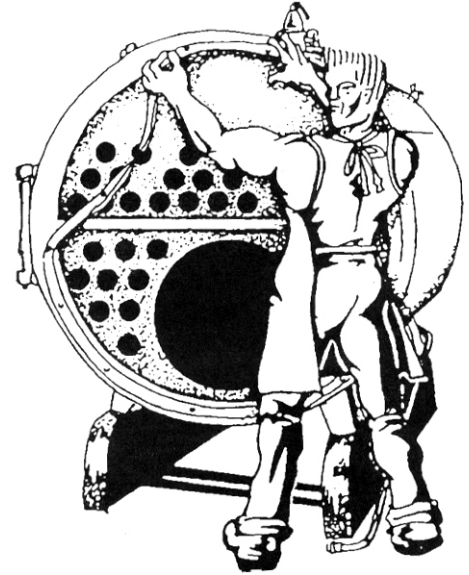
- | | |
|----------------------------------|--------------------|
| Tadpole Head Gaskets | Fiberglass Rope |
| Non-Asbestos Gaskets | Brass Nuts |
| McDonnell Miller Control Gaskets | Rivets & Fasteners |
| Manhole and Handhole Gaskets | Red Rubber Tubing |

6-B INNER DOOR DROP IN INSULATION KITS



Save time and money with easy ready-to-seal installation!

- Lightweight
- Ideal for gas and oil-fired applications
- 48", 60", 48", 96" sizes available



BOILER TILE

6-C CB TILE

36" boiler

| item# | ref# | description | qty/set |
|------------|--------|----------------------|---------|
| 15-60-024 | 94-115 | baffle CB/CBH/P&M | 4 (7) |
| 15-60-025 | 94-90 | throat tile CB 15-40 | 2 |
| 15-30-025a | 94-113 | throat tile CB15-40 | 2 |
| 15-60-025b | 94-114 | throat tile CB15-40 | 2 |
| 15-60-027 | 94-143 | site tube CB/CBH/P&M | 1 |

48" boiler (old style)

| item# | ref# | description | qty/set |
|------------|--------|--------------------------|---------|
| 15-60-020 | 94-160 | liner tile 50-100 | 6 (8) |
| 15-60-022 | 94-116 | baffle CB/CBH/P&M 50-100 | 6 (9) |
| 15-30-021 | 94-386 | throat tile CB15-40 | 6 (8) |
| 15-60-023 | 94-165 | site tube | 1 |
| 15-60-020b | 94-388 | liner P&M 50-60 | 6 (8) |
| 15-60-020c | 94-143 | liner CBH 50-100 | 6 (8) |

48" boiler (new style)

| item# | ref# | description | qty/set |
|------------|--------|--------------------------|---------|
| 15-60-020a | 94-216 | liner tile | 12 (16) |
| 15-60-022a | 94-172 | baffle CB/CBH/P&M 50-100 | 6 (9) |
| 15-30-021a | 94-217 | throat tile CB 50-80 | 8 (8) |
| 15-30-021b | 94-218 | throat tile CB 50-100 | 8 (8) |
| 15-60-023 | 94-165 | site tube | 1 |

60" boiler

| item# | ref# | description | qty/set |
|-----------|--------|-------------|---------|
| 15-60-001 | 94-203 | liner tile | 17 |
| 15-60-002 | 94-130 | throat tile | 16 |
| 15-30-003 | 94-144 | baffle tile | 12 |
| 15-30-004 | 94-166 | site tube | 1 |

78" boiler

| item# | ref# | description | qty/set |
|-----------|--------|-------------|---------|
| 15-60-005 | 94-204 | liner tile | 39 |
| 15-60-006 | 94-393 | throat tile | 24 |
| 15-30-007 | 94-162 | baffle tile | 15 |
| 15-60-008 | 94-167 | sight tube | 1 |

96" boiler

| item# | ref# | description | qty/set |
|-----------|--------|-------------------------------------|---------|
| 15-60-009 | 94-205 | liner tile 400-500 hp high pressure | 33 |
| 15-60-010 | 94-205 | liner tile 400-500 hp low pressure | 35 |
| 15-30-011 | 94-205 | liner tile 600-800 hp high pressure | 49 |
| 15-60-012 | 94-205 | liner tile 600-800 hp low pressure | 52 |
| 15-60-013 | 94-344 | throat tile | 35 |
| 15-60-014 | 94-189 | baffle tile | 19 |
| 15-60-015 | 94-168 | sight tube | 1 |

Watertube

| item# | ref# | description | qty/set |
|-----------|---------|--------------------------|---------|
| 15-60-040 | 94-302 | arch brick "BR" burner | 20 |
| 15-60-041 | 94-304 | arch brick "CN" burner | 23 |
| 15-30-042 | 94-310 | throat brick "CN" burner | 10 |
| 15-60-043 | 94-312 | throat brick "BR" burner | 12 |
| 15-60-044 | 94-311 | throat brick "A" burner | 1 |
| 15-60-045 | 94-303 | arch brick "A" burner | 1 |
| 15-60-046 | 213/215 | wall brick model "3" | 1 |

"CB" and "Clever Brooks" are registered trademarks of the Cleaver-Brooks division of Aqua-Chem, Inc. The products described herein are not manufactured or authorized by Cleaver-Brooks, nor is ARGCO in any way associated or affiliated with Brooks or Cleaver-Brooks or Aqua-Chem, Inc.

800-854-1015

www.argco.com

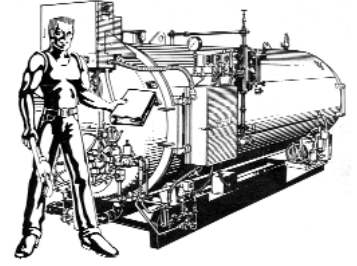
FAX 760-727-3270



ARGCO

SINCE 1981

BOILER SPECIALTIES



7-A FLUE BRUSHES

Single Spiral Flue Brushes
2", 2-1/2", 3" sizes



BOILER GASKETS - MANHOLE & HANDHOLE

7-B TOPOG-E MOLDED RUBBER GASKETS

Topog-E® -the original molded rubber gasket stops leaks and protects the life of steam boilers, water heaters, air tanks, and other selected pressure vessels. Used in steam boilers operating at up to 180 psi and 380° F.



Elliptical



Obround



Round



Bolt

Topog-E® gaskets conform to the topography of both surfaces to seal immediately

- No seepage
- No stalactites
- No corrosion
- No downtime loss

Also available:

- Railroad tank car dome gaskets
- Water hydrant gaskets
- Gauge glass gaskets
- Sheet material



Special Shapes

ARGCO
ALLIED RUBBER & GASKET COMPANY

7-C SPIRAL WOUND GASKETS

Boiler Manhole Cover

Boiler Handhole & Tubecap

- | | |
|-------------------------|---------------|
| •Babcock & Wilcox | •Oil Field |
| •British | •Riley Stoker |
| •Cleaver Brooks | •Springfield |
| •Combustion Engineering | •Superheater |
| •Foster-Wheeler | •Union |
| •Heine | •Vogt |
| •Keeler | •Wickles |

Fully equipped spiral wound department, press and machine shop

Style 14 standard - 304 stainless steel and non-asbestos winding

Other metals - 316SS, 347SS, monel, nickel, titanium, inconel, hastelloy

Other fillers - PTFE, ceramic, grafoil

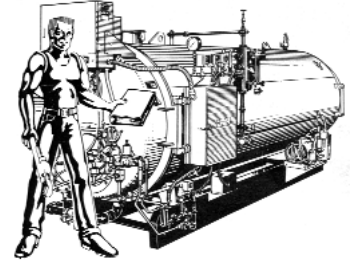
Special metal gaskets - heat exchanges, corrugation, solids, french types, lead gaskets, single and double jackets



ARGCO

SINCE 1981

BOILER SPECIALTIES



8-A DIE-CUT BOILER GASKETS

Handhole Gaskets



Neoprene EPDM
Obround=OB
1/4" thick



Neoprene EPDM
Elliptical=E
1/4" thick

Manhole Gaskets



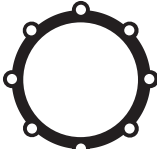
Neoprene EPDM
Elliptical=E
1/4" thick

Neoprene good to 15 lbs. pressure
and 250° F temperature for hot
water boiler

8-B MC DONNELL MILLER NON-ASBESTOS CONTROL GASKETS



32-39



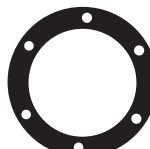
37-26



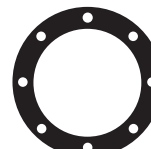
CO-12



69-112



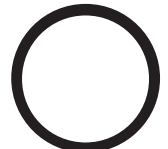
CO-11
847-26



150-14



150-9



F-26

FLANGE GASKETS

8-C CIRCULATING PUMP FLANGE GASKETS

- Standard (Tako, B&G) 3" BC
- Heavy Duty 3-1/2" BC

Also available: Heat exchanger gaskets, P-type quick connection,
water meter and more

8-D 125 - 150 LB. FLANGE GASKETS

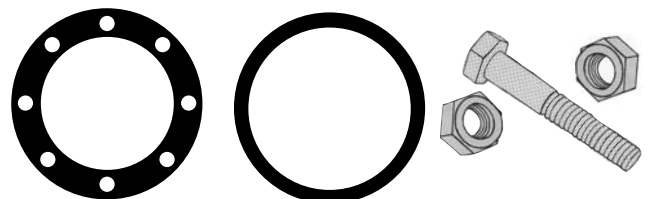
Materials: Buna-N (nitrile) , Butyl, Cloth Inserted, Non-asbestos compressed, EPDM, Graphite, Hypalon, Neoprene (50 thru 70 duro), Neoprene Diaphragm (duck inserted), Red Rubber, Silicone (50 thru 70 duro) tan pure gum, tetrablue, tetraglass, vegetable fiber, viton (flouroelastomer), white food grade rubber, wire inserted tetraglas.

8-E 250 - 300 LB. FLANGE GASKETS

Materials: Buna-N (nitrile) , Butyl, Cloth Inserted, Non-asbestos compressed, EPDM, Graphite, Hypalon, Neoprene (50 thru 70 duro), Neoprene Diaphragm (duck inserted), Red Rubber, Silicone (50 thru 70 duro) tan pure gum, tetrablue, tetraglass, vegetable fiber, viton (flouroelastomer), white food grade rubber, wire inserted tetraglas.

8-F NUT, BOLT & GASKET SETS

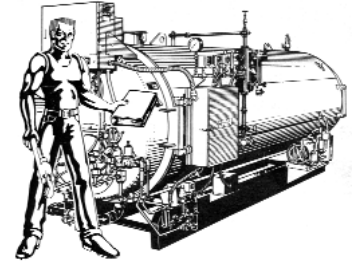
For standard raised face steel flanges and fittings.
Grade 2 plain hex head bolt & hex nut.
Available with above materials - ring or full face gaskets.
150# and 300# in stock.





ARGCO
SINCE 1981

BOILER SPECIALTIES



9-A SHEET PACKING MATERIAL

Custom die-cut and molded specialties from any material. Simply provide a sample or drawing and ARGCO can manufacture to your particular specifications.

RUBBER SHEET PACKING

Materials: Red Rubber (75 duro), Cloth Inserted (SBR), Tan Pure Gum (40 duro), Nitrile (60 duro), Neoprene (40, 50, 60, 70, 70 duro), White Food Grade (60 duro), Hypalon (60 duro), Butyl (60 duro), Neoprene diaphragm (duck inserted), Neoprene (nylon inserted), EPDM (60 duro), Viton (75 duro)

COMPRESSED SHEET

Non-asbestos sheet which exhibits properties similar to many compressed asbestos materials and can be used for most applications as compressed asbestos. It has the same low temperature application capability. Anti-stick characteristics are incorporated into the sheet. It is for use with gases, water, steam, organic acids, alkalis, aromatic and aliphatic hydrocarbons, oils, greases, and refrigerants. 60" x 60" sheets with several thicknesses available.

BLUE T-LON SHEET

T-Lon is a non-asbestos gasketing material containing inorganic round beads consistently dispersed throughout a PTFE base. This allows for precision control over cold-flow problems inherent with virgin PTFE. It virtually eliminates the need for retightening.

•Temp: -350° F to +500° F

•Sheet size: 1/16" x 60" x 60" and 1/8" x 60" x 60"

GRAPHITE LAMINATE SHEET

Versatile sheet used for high temperature applications. Offers excellent chemical resistance.

Purity: >98%

Ash Content: <.5%

Temp: 2500° C (non-oxidizing atmosphere)

Compressibility: >15% Kg/

TETRABLUE SHEET

Homogenous blend of polymers and reinforcing materials which are compounded to give high compressibility, conformability, heat and chemical resistance. It is used for sealing glass-lined equipment in food and chemical processing. (Use as filler only)

68" x 71" sheet

CORK AND RUBBER SHEET

General purpose cork & rubber blended sheet packing with good resistance to oils, fuels, weather, ozone, water and non-polar industrial fluids. MIL-C-6183, Class 1 and Class 2 is available

VEGETABLE OR CORK FIBER SHEET

Vegetable Fiber Sheet: Protein-glycerine treated fiber material for general purpose flange gaskets where temperatures are under 250° F.

Cork Fiber Sheet: Protein-glycerine treated fiber cork sheet packing for general purpose gaskets where temperatures are under 250° F.

PTFE SHEET

Expanded PTFE Sheet: high quality sheet made from 100% virgin grade PTFE resin. Recommended for use in heavy chemical applications. Good for acids, caustics and all steam under 600° F.

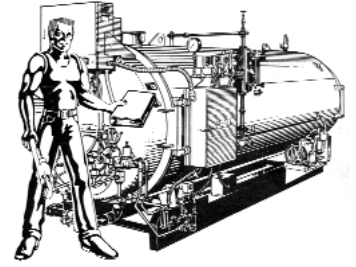
Solid PTFE Sheet (Virgin): Virgin grade PTFE resistant to acids, alkalis, solvents and corrosives.

Solid PTFE Sheet (Mechanical): Mechanical grade PTFE resistant to acids, alkalis, solvents and corrosives.



ARGCO
SINCE 1981

BOILER SPECIALTIES



ENVELOPE GASKETS

ARGCO offers PTFE envelope gaskets in three standard styles with almost any combination of filler materials. Fillers and envelopes are available individually for customer assembly.

Style 110: designates a slit or V-type envelope.

Style 115: a machined or milled center envelope.

Style 100: a form shield envelope for use where large ID, OD, or oval shape openings cannot be satisfied by a slit or milled type envelope.



Fillers: Darpac, Tetrablue[®], Tetraglass[®], Neoprene, Viton, Corrugated Steel.

10-A COMPRESSION PACKING

Compression type packings are the most common means of controlling fluid loss in mechanical equipment. Made from soft, pliant materials, they find major use in rotary, centrifugal and reciprocating pumps, valves, expansion joints, and many other types of mechanical equipment.

Twisted Non-Asbestos Valve Stem Packing- synthetic yarns, twisted lubricated and graphited. Seals up to 500° F against hot & cold air, water & ammonia.

Square Braided Non-Asbestos Pump Packing- synthetic fiber and impregnated with lubricant & graphite, 500° F - pH range 4-10.

PTFE Impregnated Non-Asbestos square braided -synthetic fiber with each strand individually impregnated with PTFE plus break-in lubrication. 500° F.

Flax Packing - Regular for use with cold water, brine and cold oil. Can be used on rods and plungers of pumps, rams or hydraulic presses, and stern tube glands. Up to 200° F.

PTFE Filament Packing manufactured from pure PTFE fibers in special braid construction which provides a packing having increased sealing contact at reduced gland pressures.

Kevlar Pump Packing[®] Non-asbestos braided packing utilizing Kevlar[®]. Its high temperature capability eliminates thermal expansion problems. Replaces Asbestos/TFE and Asbestos/Graphite packings. Temp -100° F to +400° F.

Expanded Graphite Packing An unusual packing which requires no special lubricants or modifications. High resistance, low friction, chemically resistant and high heat transfer. Pressure up to 100 psi and vacuum service to 500° F.

Special Braid PTFE Filament with Encapsulated Graphite For use in pumps, agitators, mixers, valves. Noted for dimensional stability and long life for all services except strongly oxidizing media, fuming nitric acid, gaseous fluorine. -328° F to +535° F.

PTFE Filament Gasket Tape Braided tubular PTFE filament gasket tape for use on autoclaves, glass lined vessels or uneven flanges. Non toxic, corrosion resistant and chemically inert. 500° F. Pressures up to 200 psi.

argco.com

Easy on-line shopping 24 hours a day

ARGCO - Microsoft Internet Explorer

File Edit View Favorites Tools Help

Back Forward Stop Home Search Favorites



Address <http://www.argco.com/cgi-bin/item/index.html>

ARGCO

Log-in and purchase any ARGCO item with our secured shopping cart

Maintain your account, Track an order

HOME | LOGIN | YOUR CART | CHECK OUT | SERVICE | ABOUT US



| EXPLORE ARGCO | REFERENCE |
|----------------------------|----------------------|
| Fire Sprinkler Specialties | Piping Tools |
| Fire Equipment | Boiler Specialties |
| Valves | Plumbing Specialties |
| Piping Chemicals | Shop Supplies |
| Hangers & Fasteners | ARGCO Specials |
| | Tech Data |
| | MSDS |
| | Credit Application |
| | View Catalogs |

Get technical information or product MSDS

Download a catalog

hangers & fasteners



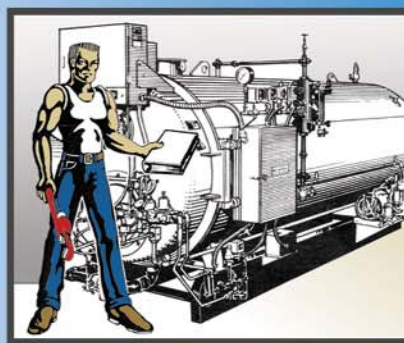
fire equipment



piping chemicals



gasket & boiler specialties



800-854-1015



www.argco.com