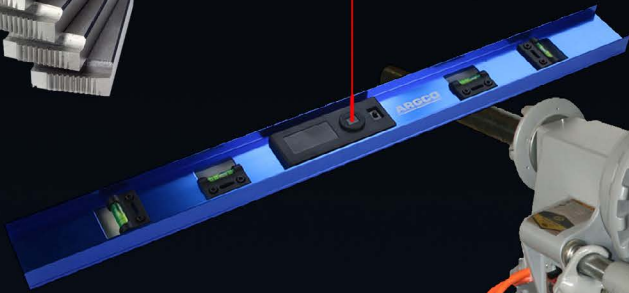




ARGCO

INNOVATIVE PIPE WORKING TOOLS



JANUARY 2025



ARGCO

INNOVATIVE PIPE WORKING TOOLS

1" to 12" COMBINATION ROLL GROOVERS

ARGCO RGM-840 HEAVY DUTY COMBO ROLL GROOVER

**Schedule 40 Groover for up to 8" pipe.
STRONG ENOUGH TO GROOVE SCHEDULE 40 ALL DAY LONG!**

ARGCO RGM-440 LIGHTWEIGHT COMBO ROLL GROOVER

27 lbs. Light enough to Groove In-the-Air

•Easily swap out shafts in 30 seconds

•Chucks into 300 Machine for Power Grooving or Manually Roll Groove in the air or with a pipe vise.

•Roll Groove without Removing Carriage Assembly

8" Drive Shaft Extension disperses stress on the roll groover
Carriage assembly to stays in place



RGM-840

•Extendable Ratchet Wrench with Swivel Handle

More torque
No need to take off your gloves



RGM-440

Sturdy Carrying Case

- Hold all extra parts
- Protect your equipment



ARGCO RGM-840 HEAVY DUTY COMBINATION ROLL GROOVER

- Capacity: 1" - 12" pipe | Max wall thickness .315" (8 mm)
- 1" - 8" schedule 10/40 pipe
- 8" - 12" schedule 10 pipe
- Heavy Duty Ductile Iron Construction

Includes:

- Two Groove Rollers
- Four Drive Shafts
- 2 support arms
- Ratchet Wrench
- Drive Shaft Extension
- Sturdy Carrying Case



Item # 3309130

ARGCO RGM-440 LIGHTWEIGHT COMBINATION ROLL GROOVER

- Capacity: 1" - 12" pipe | Max wall thickness .236" (6mm)
- 1" - 4" schedule 10 and 40 pipe
- Use 2" - 6" optional shaft for better performance on schedule 40 pipe
- 8" - 12" roller and shaft for schedule 10 pipe

Includes:

- Two Groove Rollers
- Three Drive Shaft
- 2 support arms
- Ratchet Wrench
- Drive Shaft Extension
- Sturdy Carrying Case



Item # 3309120

ARGCO.com • 800.854.1015



ARGCO

INNOVATIVE PIPE WORKING TOOLS

SHOP HYDRAULIC ROLL GROOVERS

ARGCO RGEH-1240

- **Best-in-Class High Performance Plug & Play Roll Grooving Machine with Integrated Motor**
- **2" to 12" Schedule 40 pipe**
- **Quiet 23 rpm motor**



- Capacity: 2" - 16" pipe | Max pipe wall thickness: .393" (10 mm)**
- 2" - 12" Schedule 10/40 Pipe | up to 16" sch 10 with optional roller sets*
 - Single Phase 1100 Watt 23 rpm Motor
 - Weight: 290 lbs
 - High performance gear reducing motor
 - Integrated hydraulic feeding pump & groove depth lock nut
 - Specially designed roll set prevents flares on pipe ends
 - Split type hydraulic system prevents oil leakage & extends motor life
 - Pipe Stabilizer designed to prevent sway for larger pipe sizes

Includes:

- 3 Drive Rollers
- 3 Groove Rollers
- Removeable Foot Switch
- Pipe Stand
- Pipe Stabilizer

*Optional:

- 14-16" Roller Set

**RGEH-1240
Heavy Duty Hydraulic
Roll Grooving Machine**
[\(Item: 3309221\)](#)



ARGCO RGEH-840

- **Hydraulic Roll Grooving Machine with Pipe Stand for Shop or Field Fabrication**
- **Quiet 23 rpm motor for occupied job spaces**



Capacity: 1" - 12" | Max pipe wall thickness: .314 (8 mm)

- 1" - 8" Schedule 10/40 Steel Pipe | 10" - 12" Schedule 10/20 Steel Pipe
- Single Phase 1100 Watt 23 rpm Motor
- Weight: 200 lbs
- High performance gear reducing motor
- Integrated hydraulic feeding pump & groove depth lock nut
- Specially designed roll set prevents flares on pipe ends
- Pipe Stabilizer designed to prevent sway for larger pipe sizes

Includes:

- 4 Drive Rollers
- 3 Groove Rollers
- Removeable Foot Switch
- Pipe Stand
- Pipe Stabilizer



**RGEH-840
Hydraulic
Roll Grooving
Machine**
[\(Item: 3309222\)](#)

**RGEH-840A
Hydraulic Roll Grooving Machine
with Trolley Wheel Stand**
[\(Item: 3309222A\)](#)

ARGCO.com • 800.854.1015



ARGCO

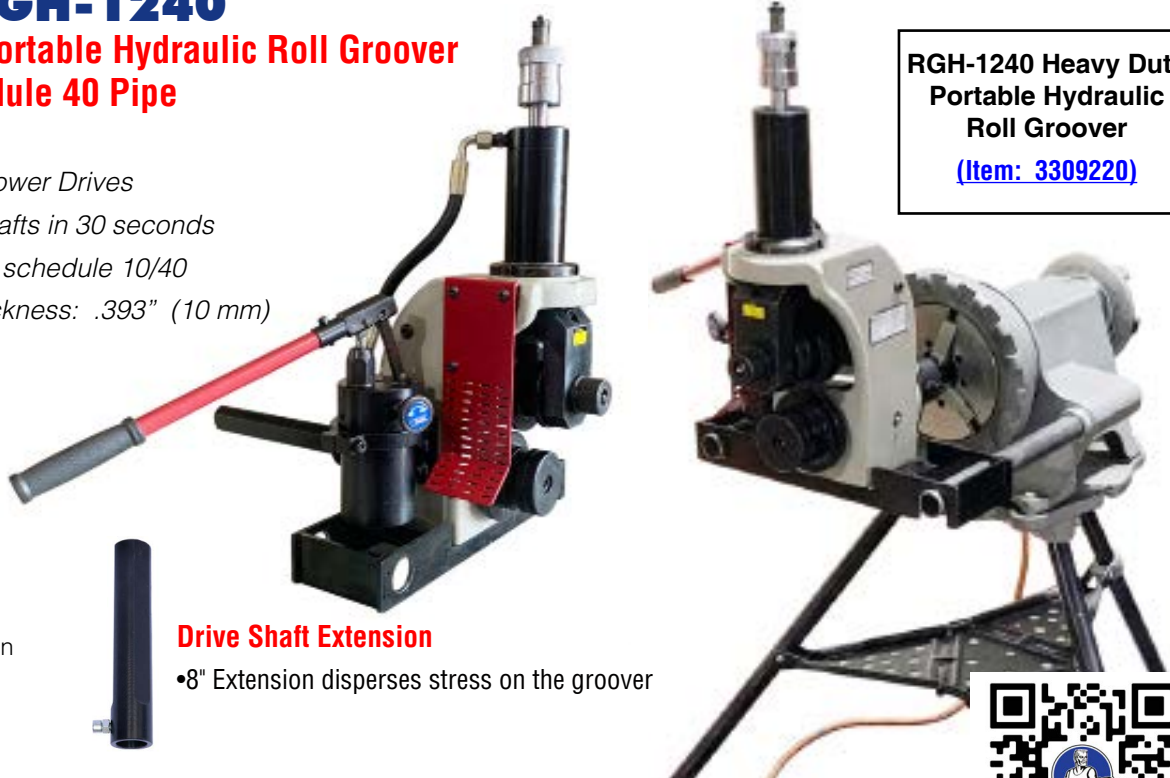
INNOVATIVE PIPE WORKING TOOLS

PORTABLE HYDRAULIC ROLL GROOVERS

ARGCO RGH-1240

**Best-in-Class Portable Hydraulic Roll Groover
2" to 12" Schedule 40 Pipe**

- Chucks into 300 Power Drives
- Easily swap out shafts in 30 seconds
- Capacity: 2" - 12" schedule 10/40
- Max Pipe Wall Thickness: .393" (10 mm)
- Weight: 96 lbs.



**RGH-1240 Heavy Duty
Portable Hydraulic
Roll Groover**
[\(Item: 3309220\)](#)

Includes:

- 3 Drive rollers
- 3 Groover Rollers
- Driver Shaft Extension

Drive Shaft Extension

- 8" Extension disperses stress on the groover



ARGCO RGH-440

**At 44 lbs. a truly PORTABLE HYDRAULIC ROLL GROOVER
Roll groove with carriage & die head in place**

- Chucks into 300 Power Drives
- Easily swap out shafts in 30 seconds
- Capacity: 2" - 4" sch 10/40 and 5 to 8" Sch 10/20 pipe
- Max Pipe Wall Thickness: .236 (6 mm)



**RGH-440 Lightweight
Portable Hydraulic
Roll Groover**
[\(Item: 3309215\)](#)

Includes:

- 2 Drive rollers
- 2 Groover Rollers
- Drive Shaft Extension

Drive Shaft Extension

- Disperses stress on the roll groover
- Chucks into power drive allowing carriage assembly to stay in place



ARGCO.com • 800.854.1015

POWER PIPE CUTTING

ARGCO HPC-12

Top of the Line Electric Hydraulic Pipe Cutting Machine

Capacity: 2" to 12" Steel Pipe

- Max Wall Thickness .393" (10 mm)
- Motor: 23 rpm Single Phase 1100 Watts
- Weight: 264 lbs. (120 kgs)
- No sparks or burrs
- Low noise gear reduction motor
- Fully sealed hydraulic pump with high quality alloy cutting blades
- Includes cutting blade & 2 pipe stands



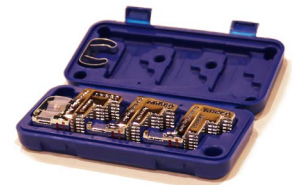
HPC-12 Electric Hydraulic Pipe Cutting Machine
[\(Item: 3309224\)](#)



OUTSTANDING JAWS

Turn 2-1/2" to 6" PIPE with your 300 Machine ALLOWING THE EASIEST & FASTEST ROLL CUTTING OF LARGE DIAMETER PIPE

- Set of 3 magnetic Jaws will grip 2-1/2" to 6" pipe
- Fits over existing chuck jaw & easily clips into place
- Expand outstanding jaws until they evenly grip the inside wall of the pipe.
- Let the power drive turn the pipe, Making roll cutting easy!



- Comes with a convenient case that clips onto the 1206 stand.



OUTSTANDING JAWS

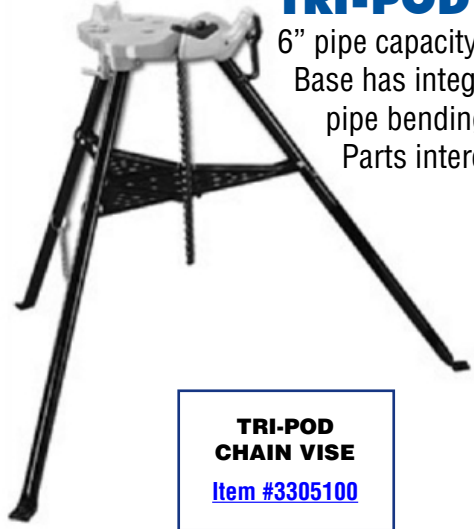
Turn & cut 2-1/2" - 6" PIPE
 with your 300 Machine

[Item # 3304405](#)



PIPE STANDS & VISES

TRI-POD CHAIN VISE with folding lower tray.
 6" pipe capacity, rear support and receding ceiling brace screw.
 Base has integral pipe rest with slots for hanging tools,
 pipe bending slots and hardened replaceable jaws.
 Parts interchangeable with competitive style units.



**TRI-POD
CHAIN VISE**
[Item #3305100](#)



**TRI-POD
CHAIN VISE
REPAIR KIT**
[Item #3305100KIT](#)

FOLDING V-HEAD

•Adjustable 27" to 42" height



**FOLDING
V-HEAD STAND**
[Item #3305250](#)

HEAVY DUTY ADJUSTABLE PIPE SUPPORTS

for Back Flows, Pipe, Manifolds and FDCs.

- Constructed of schedule 1" schedule 40 pipe with 1" all thread rod & adjustment nut
- Base: 5.5" diameter malleable iron floor flange base for mounting

Available Height Ranges:

- 18" to 24"
- 24" to 30"
- 30" to 36"
- 36" to 42"



Available Sizes: 1" thru 12" IPS

PIPE HORSES • PORTABLE PIPE PLATFORMS

- Perfect for fab work in the field or shop
- Supports up to 10 feet of pipe on two horses
- Made of heavy duty schedule 80 pipe
- Brackets and bolts provided, you just supply 1-1/2" schedule 40 pipe

Allows you to work at waist height, increasing production & reducing fatigue. You no longer have to squat and lift materials from the floor.



**PIPE HORSES
(SET OF 2)**
[Item #3305300](#)



ARGCO

INNOVATIVE PIPE WORKING TOOLS

HOLEMASTER HOLE DRILLING TOOL

Cut straight holes in pipe with Clamp and Hole Guides

LIGHTER, FASTER, EASIER than previous models



FOUR LEVELING VIALS

**PERFECT FOR
WATERFLOW DETECTORS,
MECHANICAL TEES & WELDOLETS**

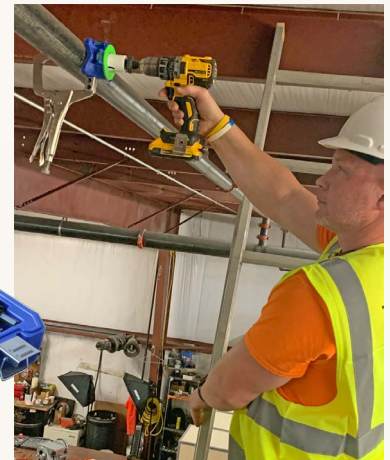
- Easier to cut a straight hole, especially from a ladder
- Cut up to 2" holes in up to 4" diameter pipe.
- Weight: 14 lbs.

Includes:

- Holemaster Clamp & Guide Head
- 6 interchangeable Hole Saw Guides
- 6 Bi-Metal Hole Saws
- 2 Arbors, 2 Pilot Bit, Hole Size Chart
- 2 Replacement Leveling Vials
- Carrying Case



PATENTED*
"QUICK CHANGE"
HOLE GUIDES
No Tools Needed



*US Patent No. D947,639

Designed to be used with
ARGCO Hole Saws

HOLEMASTER
HOLE CUTTING TOOL
Item # 3099098



ON CENTER PUNCH

Magnetic Pipe Centering Punch with horizontal and vertical levels to help cut holes in pipe.



ITEM# 3099106



HOLETHING

- Cut up to 4-1/2" holes in sprinkler pipe
- No pilot hole necessary
- Mounts easily to 2" - 6" diameter pipe
- Secure grounding - eliminates shock
- Drill won't bind & twist preventing injury
- Includes Milwaukee 1660-6 1/2" Compact Drill

ITEM# 3099093A

ARGCO.com • 800.854.1015



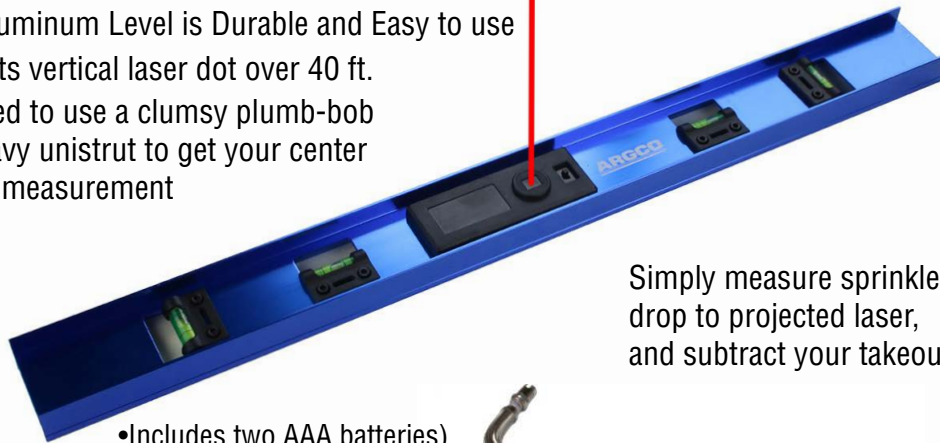
ARGCO

INNOVATIVE PIPE WORKING TOOLS

SPRINKLER LASER CENTERING LEVEL

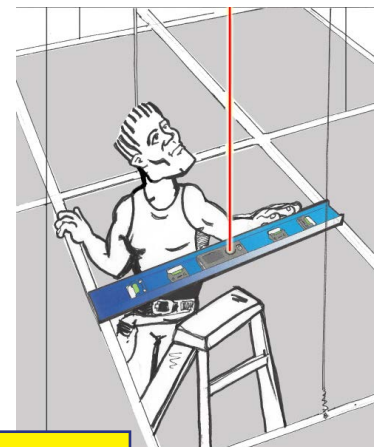
- Increase speed, accuracy and productivity
- Recessed built-in Laser Attachment & 4 leveling vials
- 24" Aluminum Level is Durable and Easy to use
- Projects vertical laser dot over 40 ft.
- No need to use a clumsy plumb-bob or heavy unistrut to get your center of tile measurement

Accurately measure center of ceiling grid tiles for fire sprinkler drops with built-in laser level.

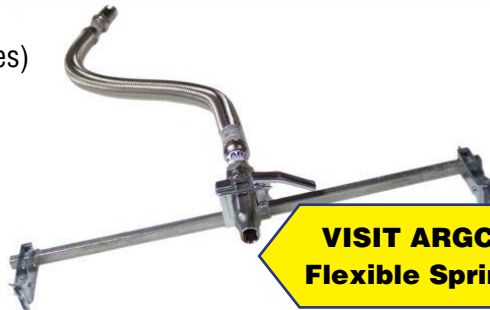


• Includes two AAA batteries)

Simply measure sprinkler drop to projected laser, and subtract your takeout



Fire Sprinkler Laser Centering Level
(Item Number: 3099104A)



VISIT ARGCO.com for Flexible Sprinkler Drops

SPOTTER LEVEL - MAGNETIC SPOT RITE LEVEL



7" long Threaded Magnetic Torpedo Level
1" Male Thread x 1/2" & Female NPT

• Made from billet 6061 aluminum

- Anodized bright red to stand out on the construction site
- Large viewing ports with neon green vials for easier visibility in low light
- Four powerful N35 rare earth magnets inserted along the flat edge
- Can also act as an emergency plug



SPOTTER LEVEL
1" Male NPT and 1/2" Female NPT
Item#: 3099105



Accessories:
Laser Level Attachment
CPVC Adapter

ARGCO.com • 800.854.1015



THE RIPTIDE FLOW TESTING SYSTEM™



The Riptide is a sturdy, stackable, and universally compatible flow testing system.

- 5 unique welded steel diffusers with one, to as many as four 2.5" fire hose connections PER DIFFUSER.
- Cam-locks come standard, so there are no additional costs to stack.
- Built from 3/16" formed & welded powder coated steel



Self-serviceable, built-in pitot with an integrated stacking system that comes standard with each version, portable, compatible with each other and totally modular for field configuration on the fly.



Double Action Riptide shown with sidemount Gauges at 9:00 position for easy reading

Glycerine Filled Calibrated Gauges
0-200 psi, Side Mount
Includes Certificate from Manufacturer



Double Action stacked on Triple Riptide allows for up to 5 hose connections



[6510920: Single](#)



[6510921: Double](#)



[6510922: Triple](#)



[6510924: Quad](#)



[6510925: 4" LDH](#)



JETSTREAM Flow Tube Assembly

Flow water to open atmosphere
2-1/2" quick connect
[item #6510951](#)



ALSO AVAILABLE:

[6510936](#): Reduced Orifice Insert 1.125"

[6510935](#): Reduced Orifice Insert 1.75"

[6510937](#): Reduced Orifice Insert 3.25" LDH

[6510930](#): Glycerine Gauges (3 & 9 o'clock)

[6510926](#): Typhoon Remote Manifold

[6510960](#): Dechlorination Attachment



ARGCO

INNOVATIVE PIPE WORKING TOOLS

HYDRA-TAP FDC CHECK VALVE CLAPPER FLUSH TOOL CONDUCTING A FORWARD FLOW OR FDC BACKFLUSH? Never Flip an FDC Check Valve Again



With The Hydra-Tap™ holding the clapper open and allowing for reverse flow, SAVE valuable TIME and MONEY!

- Drain Check Valve
- Insert Set Rod
- Set Rod into place
- Thread Tap Cylinder into Ball Drip Outlet
- Adjust and Lock into place
- Snug up Compression Nuts and you're ready to flow!



FLANGED GROOVED WAFER

No more jacks, hydraulic spreaders, sawzalls, sledge hammers, wedges, pinched gaskets and special trips to the hardware store. You're in and you're out.



Hydra-Tap
FDC Check Valve Clapper Tool
Item #: 3099140

SPYCAM
ARTICULATING INSPECTION CAMERA

- Waterproof 5mm camera cable
- Access outlets as small as 1/4"
- Up to 9 hours of video or 20,000 images.

Troubleshooting & minimize both the impact and downtime of the sprinkler system.

NFPA approved for 5 year inspection internal inspection.

Item #: 3099141

**VISIT ARGCO.com for
FDC'S, FIRE HOSE VALVES,
GROOVED CHECK VALVES
& GAUGES**



ARGCO.com • 800.854.1015



ARGCO

INNOVATIVE PIPE WORKING TOOLS

DROP NIPPLE RATCHET WRENCH



**Resize fire sprinkler drops in hard lid ceilings without cutting drywall...
NO MORE COSTLY CHARGEBACKS.**

Replace recessed or pendent type sprinklers with new concealed type fire sprinklers.

- Save time and money
- Fits cast, ductile & malleable reducing couplings
- Avoid ceiling patch or repairs
- Safer than traditional methods
- Extended height makes it easy to reach well above ceiling
- Ratchet allows for work in tight corners

How it Works:

After the old sprinkler has been removed, thread the wrench to the reducing coupling and remove drop.

Cut the sprinkler drop back to desire height, or replace nipple at desired length.

Screw reducer onto the drop tool.

Using the drop wrench, reach above ceiling to the drop nipple and thread and tighten with ratchet.

Remove tool and install the new concealed sprinkler.

Kit Includes:

- Ratchet Wrench with handle
- 1/2" threaded female drive shaft
- 1-1/4", 1-3/8", 1-1/2", 1-5/8" Hex Sockets
- 1/2" & 3/4" Drive Shafts
- Sturdy Carrying Case



**DROP NIPPLE
RATCHET
WRENCH**

Item #3099230



ARGCO.com • 800.854.1015



ARGCO

INNOVATIVE PIPE WORKING TOOLS

UNIVERSAL FIRE SPRINKLER WRENCH

ADJUSTS TO FIT ANY MODEL OF FIRE SPRINKLER HEAD
Fits Semi-Recessed, Pendent and many Concealed fire sprinklers

**NEW
IMPROVED
DESIGN**

•ROUNDED HANDLE GRIP
Allows you to apply maximum force with comfort to your hands.

•8-1/2" HANDLE
For added leverage to remove seemingly welded-on sprinkler heads.

**•TRIPLE BARREL
ADJUSTMENT KNURL**
Adding strength to extract most sprinklers



**Get rid of that
Bucket of Wrenches!**

**UNIVERSAL
ADJUSTABLE
FIRE SPRINKLER
WRENCH**

Item #3099189



ARGCO.com • 800.854.1015



ARGCO

INNOVATIVE PIPE WORKING TOOLS

PIPE THREADING EQUIPMENT

ARGCO Complete Pipe Threading Machine Package

Complete with Stand, Carriage Assembly (carriage lever, reamer, cutter).
One set 1/2" x 3/4" & One set 1-2" ARGCO Universal dies,
Oiler and one gallon of threading oil.

***Also includes Outstanding Jaws,
Transporter, Tric Tray & Oil Bucket Tray**

Threading Capacity: Pipe 1/8" through 2". Bolt 1/4" through 2".
Speed Grip Chuck with Replaceable Jaw Inserts.

[Full line of replacement parts available](#)



THREADING MACHINE COMPLETE

[38 RPM Item #3301000](#)

[57 RPM Item #3301000-57](#)



POWER DRIVE ONLY with foot switch

[Item # 3301000PD](#)



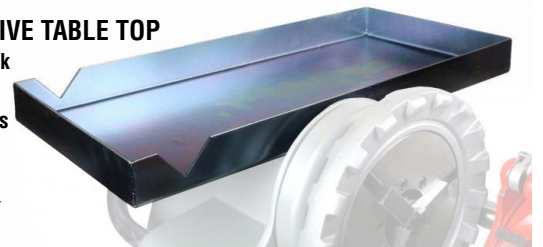
TRIC TRAY

300 POWER DRIVE TABLE TOP

- Slides into the back of the power drive behind support arms

- No loose parts

[Item # 3304401](#)



OIL BUCKET TRAY

- Sits directly below die head
- Brings the oiler up 18" closer to the oiler gun
- Catch oil without splattering the wall or floor
- Includes Oiler Gun Stand
- Fits 300 and Tri Stand Chain Vise

[Item #3304402](#)



SPLASH GUARD

Keep threading oil & chips in the oiler and off the walls and floor.

[Item # 3304400](#)



ARGCO.com • 800.854.1015



ARGCO

INNOVATIVE PIPE WORKING TOOLS

REPLACEMENT PARTS

ARGCO Brand: Equal Quality • Significant Savings • Shop & Compare

CLICK ON THE LINKS BELOW TO BROWSE CATEGORIES:

**[DIES](#) | [CARRIAGE ASSEMBLY](#) | [CARRIAGE WITH LEVER](#) | [DIE HEAD PARTS](#) | [REAMER PARTS](#)
[CUTTER PARTS](#) | [MAIN COMPONENTS](#) | [MOTOR COMPONENTS](#) | [ELECTRICAL COMPONENTS](#)
[OILER PARTS](#) | [STAND PARTS](#) | [ACCESSORIES](#)**



Universal Diehead
1/8 - 2
[3302400](#)



HSS Universal Dies
Stainless Steel Dies
1/2" & 3/4" [47765](#)
1-2" [47770](#)



Diehead Repair Kit
[3302400kit](#)



360 Cutter (1/8" - 2")
(42370)
[3302300](#)



Cutter Wheel HD
(33105)
[3302306](#)



Cutter Wheel Std.
(44185)
[3302306A](#)

Carriage Lever Kit
(42385)
[3302100A](#)



Carriage Collar Assy
(46215)
[3302107](#)



Reamer Assy
(42365)
[3302200](#)



Oiler Unit Complete
(10883)
[3303200](#)



Oiler Gun with Hose
(72327)
[3303201](#)



Power Drive Repair Kit
[3301001](#)



38 & 57 RPM Motor
(87740)
[3301000-motor](#)
38 RPM
57 RPM



Motor Armature
(44010)
[3304225](#)



Motor Brush Set
(44540)
[3304222](#)



Switch (FOR/OFF/REV)
(44505)
[3303311](#)



Foot Switch Hardwired
(36642)
[3303314](#)



Power Cord with plug
(46740)
[3303305](#)



Jaw Insert Set
(44715)
[3304127](#)



Rear Centering Assembly
(44165)
[3304108](#)

Support Arm
(44425)
[3304134](#)



Retaining Ring
(44725) [3304133](#)

Drive Shaft
(44100)
[3304109](#)



Main Drive Gear
(45370)
[3304223](#)



Transporter
(42575)
[3304403](#)

ARGCO.com • 800.854.1015

MECHANICAL VALVES

COMMERCIAL BUTTERFLY VALVES



Lever Lock - Grooved
Ductile Iron (10 Pos)
300 PSI | Sizes: 2" - 12"



Lever Lock - Wafer
Ductile Iron (10 Pos)
300 PSI | Sizes: 2½" - 8"



Low Profile - Grooved
Ductile Iron (3 Pos)
300 PSI | Sizes: 2" - 10"



Lever-Lock - Grooved
316 Stainless Steel (10 Pos)
300 PSI | Sizes: 2" - 8"

COMMERCIAL CHECK VALVES



Double Door Check - Wafer
Ductile Iron
300 PSI | Sizes: 4" - 12"



Swing Check - Grooved
Ductile Iron
300 PSI | Sizes: 2" - 12"



Swing Check - Flanged
Ductile Iron
300 PSI | Sizes: 2" - 12"
AWWA C508 & C550

COMMERCIAL GATE VALVES



OS&Y Gate - FxF, GxG, FxG
Ductile Iron
300/250/200 PSI | Sizes: 2½" - 24"
AWWA C515 & C550, NSF-61 & 372



NRS Gate - FxF, MxM, FxM
Ductile Iron
300/250/200 PSI | Sizes: 2½" - 12", 14" - 24"
AWWA C515 & C550, NSF-61 & 372



NRS Gate - GxG
Ductile Iron
300 PSI | Sizes: 2½" - 12"
AWWA C515 & C550, NSF-61 & 372



DUAL VAC - FIRE SPRINKLER VACUUM



Fire Sprinkler Vacuum designed to easily remove water from Sprinkler Drops

- Remove water left in a piping system after draining
- When connected to piping the water distribution system becomes a vacuum system
- A submersible pump and a series of floats will keep the canister empty
- Runs un-manned while sprinkler heads are being changed. Continuous run time of 4-6 hours.

Applications

- Helps in changing all types of sprinkler heads
- Relocating drops for tenant improvements
- Making repairs on a damaged or leaking system
- Removing water from pre-action or dry systems
- Used as a pump for Anti-Freeze Solutions

DUAL VAC Fire Sprinkler Vacuum

[Item #3099185](#)

HYDROSTATIC TEST PUMP

Compact powerful test pump for fire protection systems or other water based systems

- Up to 300 PSI Operating Design No Pressure Regulator
- 3.0 GPM
- 1/2 H.P. Ball bearing motor (115V) with capacitor starting
- All brass pipe and fittings
- Check valve holds system pressure if pump is unplugged
- Sturdy, easy-carry handle
- Carrying Weight Only (32 lb.)
- Compact Design 12" L x 12" W x 13" H
- Hose Filter

INCLUDES:

- 10 Foot Discharge Hose with a Quick-Disconnect and Internal Check Valve
- Liquid-filled pressure gauge

HYDRO TEST PUMP HT-90E ELECTRIC 1/2HP;300PSI 3GPM

[Item# 3099155](#)



4-WHEEL HINGED PIPE CUTTERS



- Only needs 4" clearance around pipe
- Hinges open to place cutter around pipe
- Cut pipe underground, in the air or under water, when you don't have power

• 2" to 4" Cutter [3309301](#)

• 4" to 6" Cutter [3306302](#)

• 6" to 8" Cutter [3309303](#)

All parts interchangeable with other brands



Cutter Wheels:

2" to 4" [3309311](#)

4" to 6" [3306312](#)

6" to 8" [3309313](#)



ARGCO

INNOVATIVE PIPE WORKING TOOLS

ALUMINUM PIPE WRENCHES



Our customers say that they say they save 50% and more.

Lifetime warranty on wrench handles, All parts interchangeable with other brands

10" [3306101](#)

14" [3306103](#)

18" [3306104](#)

24" [3306105](#)

36" [3306106](#)

48" [3306107](#)

Replacement Parts:

•Hook Jaw

•Heel Jaw & Assembly

•Nut

•Spring Assembly

BEAM CLAMP RATCHET WRENCH

Fits 3/8" & 5/16" square head set screws -- used with beam clamps, c-clamps and purlin clamps.



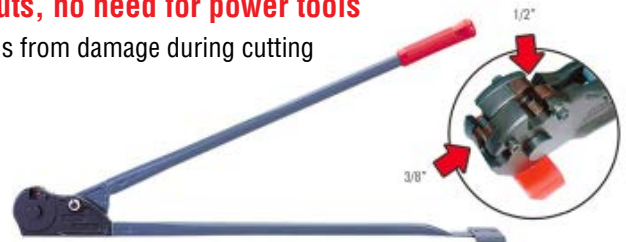
[ITEM# 3035106](#)

THREADED ROD TOOLS



THREADED ROD CUTTERS: Clean cuts, no need for power tools

- Unique die design protects the threaded rods from damage during cutting
- Easy to replace cutting dies
- Clean cut every time
- No cleaning of rod needed after cutting.



THREADED ROD CUTTER
3/8" UNC
[ITEM # 3099115](#)

DUAL SIZE ROD CUTTER
3/8" & 1/2" UNC
[ITEM # 3099118](#)

Ratchet Rod Cutter

- Ratchet Motion for easy overhead in-place rod cutting
- Spring loaded pin protects user from injury by securing cut piece to tool



RATCHET
THREADED ROD CUTTER
3/8" UNC
[ITEM # 3099120](#)

THREADED ROD CHASER



Quickly chase damaged threads after cutting threaded rod with a saw or bolt cutter.

3/8" UNC ROD [# 3099113](#)
1/2" ROD [# 3099113A](#)

ARGCO.com • 800.854.1015



GROOVED PIPE FITTING SYSTEMS

UL listed and FM approved Grooved and Threaded pipe fittings, adapters and outlets that meet and exceed the industry's high demands.

ARGCO.com Pipe Fittings



PIPE FITTINGS

[Ductile and Malleable Iron Threaded Fittings.](#)
[Pipe Nipples.](#) [Welded Outlets.](#)
[Pipe Flange Gaskets and Bolt kits](#)



FLOW CONTROL VALVES

UL and FM state ARGCO meets the specifications for fire sprinkler installations.

Equal Quality and Guaranteed Savings.

ARGCO.com Valves



RISER MANIFOLD ASSEMBLIES

ARGCO's [Commercial](#) & [Residential Risers](#) come factory assembled with the necessary accessories for a cost effective, yet complete riser assembly.

Includes: UL Listed pressure gauge, a 1/4" three-way valve, and System Sensor or Potter Electric waterflow switch.

Optional:

- a. Test & Drain Trim with 5.6K Factor
- b. Pressure Relief Trim with Test & Drain Valve with 175 psi pressure rating

ARGCO.com Valves



PIPE HANGERS FOR STEEL & CPVC PIPE

ARGCO's line includes: steel pipe hangers & clamps, beam clamps, brackets, threaded accessories, nuts, bolts, as well as Fire Protection and Seismic products featuring CPVC straps and seismic sway brace fittings.

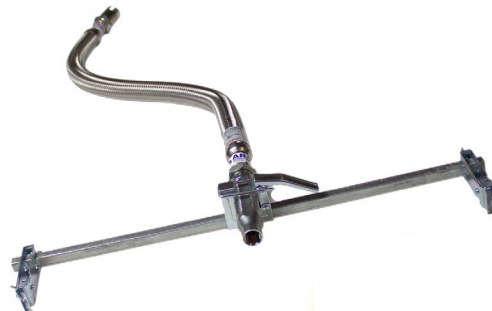
ARGCO.com Hangers & Seismic



MEGA-FLEX FLEXIBLE SPRINKLER DROPS

- High Performance Flexible Connection
- Full 1" inner flow diameter
- Available in straight and 90° nipple
- Available with pre-assembled brackets

ARGCO.com Flexible Sprinkler Drops



ARGCO.com • 800.854.1015



ARGCO

INNOVATIVE PIPE WORKING TOOLS

PIPE THREAD SEALANTS

SUPERDOPE ANAEROBIC THREAD SEALANT



State of the Art Anaerobic Thread Sealant that chemically hardens in the absence of air into a tough, structural solid.

- Will not loosen, set or shrink
- Uses less material
- Cures to pipe burst pressure
- Pipe joints and fittings are locked against vibration loosening

SUPERDOPE ANAEROBIC THREAD SEALANT



TUF-GLIDE THREAD SEALANT WITH PTFE



- Pipefitters Report that Tuf-Glide is Easier to apply, easier to pull up on pipe wrench, greatly reduced effort and eliminates leaks.
- Sticks to hot, oily pipe, drips less, and saves oil, dies and money!

TUF-GLIDE THREAD SEALANT



PTFE THREAD SEAL TAPE

Standard Density, High Density, or Premium Density Gas Tape. ARGCO offers it all, including domestic or import.



INDUSTRIAL (0.4 DENSITY)



HIGH (0.8) DENSITY



PREMIUM (1.0) DENSITY

FIRE STOP

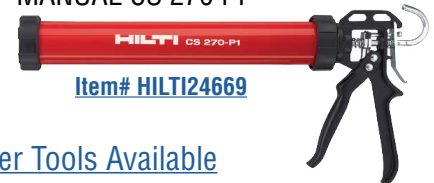
HILTI FS-ONE MAX FIRESTOP

INTUMESCENT SEALANT



20 oz. Foil Pack (25 pcs)
Item# [HILTI3530250](#)

FOIL PACK DISPENSER
MANUAL CS 270 PI



Item# [HILTI24669](#)



[Complete Hilti Line of FireStop, Mechanical Anchors & Power Tools Available](#)

ANTI-FREEZE

TYCO LFP® ANTIFREEZE FOR FIRE PROTECTION



- Features a minimum use temperature of -23.3°C / -10°F
- Available for residential, commercial, and some storage applications
- FBC™ System Compatible for use with BlazeMaster® CPVC pipe & fittings
- Meets NFPA 13, 13R, 13D and 25 requirements for use of listed antifreeze

[Available in Pails, Drums and Totes](#)



ARGCO.com • 800.854.1015



ARGCO.com

ARGCO SALES: toll free: 800-854-1015 | international: 760-727-1644 | fax: 800-924-5922 | email: sales@argco.com