



**2022
PRODUCT
CATALOG**

SAMMYS[®]

Sammys® for Wood	4 - 5
Sammys® for Steel.....	6 - 7
Sammy X-Press® for Steel.....	8 - 9
Sammys® for Concrete	10 - 11
Sammys Toggle™.....	12
Dektite® Pipe Flashing.....	12
Sammys Pole Tool™	13
Approvals.....	14
Special Notes	15

Warranty • Disclaimer of Warranty

Proper fastener connection design takes in to account where and how fasteners are used. Allowance for special characteristics in materials, differences in materials, differences in types of materials being joined, unique or unusual environmental service or installation conditions and the safety factors required by anticipating normal or short term loading conditions must be considered. Due to possible differences in specifications, applications, and interpretation of results, purchasers and specifiers must make their own evaluation of the products, to determine the suitability of these products for intended use. All warranties of Buildex products, expressed or implied, including the warranties of merchantability and fitness for particular purposes are specifically excluded except for the following: Buildex will repair or replace any product which, within twelve months after sale by Buildex or its distributors, is found by Buildex to be defective in material or workmanship - normal wear and tear accepted. This is the sole warranty of Buildex and the sole remedy available to distributor or buyer. Buildex shall not be liable for any injury, loss or damage, direct, indirect, or consequential, arising out of the use of, or the inability to use, any Buildex product.

WOOD & STEEL INSTALLATION

1. Install appropriate Sammy nut driver (as shown on box label) in a 3/8" or 1/2" portable drill and insert the anchor into the nut driver.
2. Position drill perpendicular to the structural member and begin drilling (**DO NOT USE IMPACT OR HAMMER MODE**).
3. When the nut driver spins freely on the cap of the screw, stop drilling and remove. Installation is now complete.
 - DSTR and SWDR models add retainer nut and hand tighten (torque to 20 in-lbs max)

*For Sammys for Steel, use drill speeds as shown below:

SAMMYS FOR STEEL	SUGGESTED DRILL SPEED (RPM)
DSTR1-1/2, TEK 50, TEK 5.0, SDWR 1-1/2, SH-TEK 50	0 - 1800
All Other SAMMYS for Steel	0 - 2500

VERTICAL INSTALLATION



HORIZONTAL INSTALLATION



CONCRETE INSTALLATION

1. Using included 1/4" diameter carbide tip drill bit, predrill the concrete member to a depth of 2", with a hammer drill or rotary hammer set on hammer mode.
 - For faster concrete installation see available concrete installation kit (8122910)
2. Install appropriate Sammy nut driver (as shown on box label) in a 3/8" or 1/2" portable drill and insert the anchor into the nut driver.
3. Position drill perpendicular to the structural member and begin drilling (**DO NOT USE IMPACT OR HAMMER MODE**).
4. When the nut driver spins freely on the cap of the screw, stop drilling and remove. Installation is now complete.

VERTICAL INSTALLATION



HORIZONTAL INSTALLATION



Note: SAMMYS nut drivers have a unique spin off feature which provides a fast and safe installation each time. When the face of the driver comes in contact with the material you are installing into, continue drilling until nut driver spins free. Installation is then complete. Warranty is void if other tools (or modified nut drivers) are used for installation.

Eye protection should be worn at all times when installing this product

SAMMY X-PRESS INSTALLATION

Only install Sammy X-press with UXPIT tool (8194910)

1. Insert the UXPIT hex receiver into 3/8" or 1/2" portable drill and pull handle end of tool away from drill to expose 25/64" drill bit; set aside handle end of tool
2. Drill pilot hole through metal deck or purlin
3. Slide handle end of tool over drill bit until it connects to the receiver and insert Sammy X-press anchor into socket
4. Insert the Sammy X-Press anchor through the pre-drilled hole
5. While holding onto tool handle, start the drill Sammy X-press anchor until it spins freely

For structural concrete over metal deck, follow steps above before pouring concrete

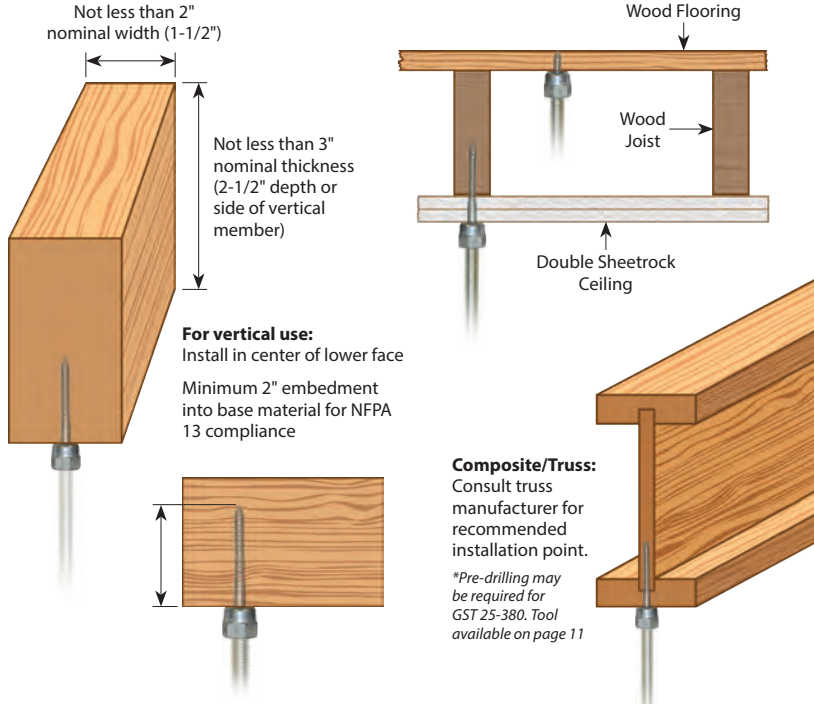
For non-structural lightweight concrete applied over metal deck not for use with air dry density greater than 35 PCF, follow steps above after the lightweight concrete has been applied

ITW CCNA Terms and Conditions

Visit www.itwccna.com for terms and conditions



SAMMYS FOR WOOD – Vertical Application



PRODUCT FEATURES

- No pre-drilling required
- Quick to install using the Sammy Nut Driver with an 18V cordless drill
- Saves time from traditional methods
- Reduces installation costs
- Assembled in the U.S.A.



View our installation videos:
www.sammysanchors.com/install

VERTICAL MOUNT

Approvals	Rod Size	Part Number	Model	Screw Description	Ultimate Pullout (lbs)	UL Test Load (lbs)	FM Test Load (lbs)	Box Qty	Case Qty	Nut Driver
	1/4"	8002957	GST 100	1/4 x 1"	210 (7/16" OSB) 760 (3/4" Ply)			25	125	#14 Black Part # 8113910
	1/4"	8003957	GST 200	1/4 x 2"	1760 (Fir)			25	125	#14 Black Part # 8113910
	3/8"	8007957	GST 10	1/4 x 1"	210 (7/16" OSB) 760 (3/4" Ply)	300		25	125	#14 Black Part # 8113910
	3/8"	8008957	GST 20	1/4 x 2"	1760 (Fir)	850	1475	25	125	#14 Black Part # 8113910
	3/8"	8068925	GST 20-SS*	1/4 x 2"	1760 (Fir)	850		25	125	#14 Black Part # 8113910
	3/8"	8009925	GST 25-380	3/8 x 2-1/2"	2113 (Fir)	1500		25	125	#14 Black Part # 8113910
	3/8"	8010957	GST 30	1/4 x 3"	2060 (Fir)	1500	1475	25	125	#14 Black Part # 8113910
	1/2"	8013925	GST 2	1/4 x 2"	1760 (Fir)			25	125	#14 SW Red Part # 8114910
	1/2"	8015925	GST 3	1/4 x 3"	2275 (Fir)			25	125	#14 SW Red Part # 8114910

* GST-20-SS is Stainless Steel

SAMMYS NUT DRIVERS



#14 Black Nut Driver
Part # 8113910



#14 SW Red Nut Driver
Part # 8114910



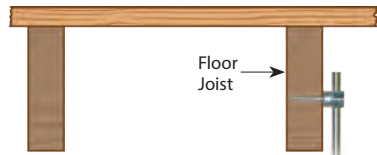
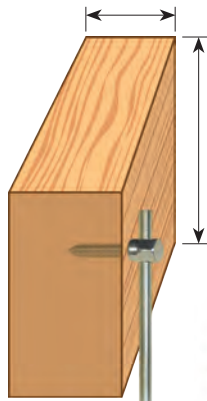
#14 SH Orange Nut Driver
Part # 8273910

SPECIAL NUT DRIVER SYSTEM: The nut drivers were designed with a unique spin-off feature which provides a fast and safe installation each time. When the face of the driver comes into contact with the material you are installing into, continue drilling until nut driver spins free. Installation is then complete. Warranty requires the use of the appropriate nut driver for installations.



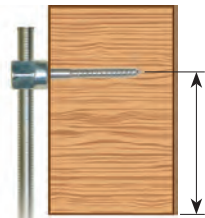
SIDEWINDER® FOR WOOD – Horizontal Application

Not less than 2" nominal width (1-1/2") up to 3-1/2" pipe; not less than 3" nominal width (2-1/2") 4" & 5" pipe



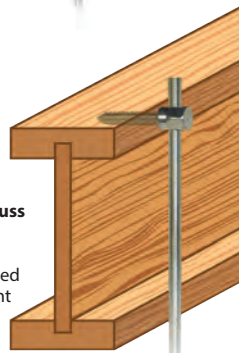
Floor Joist

Minimum 2-1/2" from bottom for branch lines. Minimum 3" from bottom for main lines. Exception: This requirement shall not apply to 2" or thicker nailing strips resting on top of steel beams.



Composite / Truss
Consult truss manufacturer for recommended installation point

*Pre-drilling may be required for SWG 25-380. Tool available on page 11

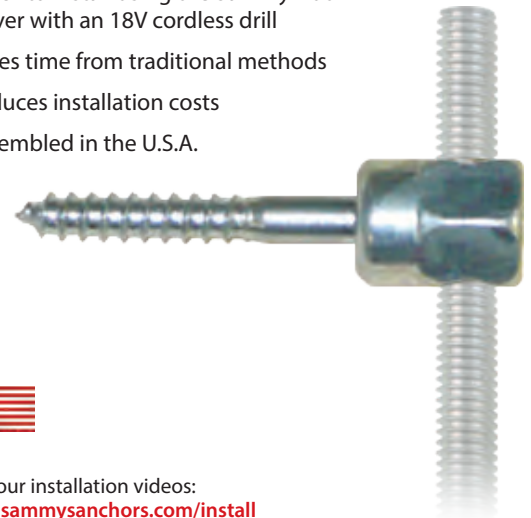


PRODUCT FEATURES

- No pre-drilling required
- Quick to install using the Sammy Nut Driver with an 18V cordless drill
- Saves time from traditional methods
- Reduces installation costs
- Assembled in the U.S.A.



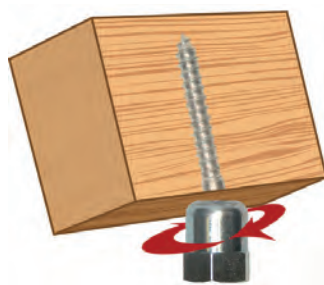
View our installation videos:
www.sammysanchors.com/install



HORIZONTAL MOUNT

Approvals	Rod Size	Part Number	Model	Screw Description	Ultimate Shear (lbs)	UL Test Load (lbs)	Box Qty	Case Qty	Nut Driver
	3/8"	8020957	SWG 10	1/4 x 1"	622 (Fir)	300	25	125	#14 SW Red Part # 8114910
	3/8"	8021957	SWG 20	1/4 x 2"	1725 (Fir)	1050	25	125	#14 SW Red Part # 8114910
	3/8"	8022925	SWG 25-380	3/8 x 2-1/2"	2249 (Fir)	1500	25	125	#14 SW Red Part # 8114910
	3/8"	8023925	SWG 30	1/4 x 3"	1884 (Fir)	1500	25	125	#14 SW Red Part # 8114910

SAMMYS SWIVEL HEAD™ FOR WOOD – Swivel Application



Max. Angle 89°

PRODUCT FEATURES

- Eliminates distortion of threaded rod
- Accommodates up to 3 1/2" x 12 pitch roof
- Saves time from traditional methods
- Reduces installation costs
- Assembled in the U.S.A.



View our installation videos:
www.sammysanchors.com/install



SWIVEL MOUNT

Approvals	Rod Size	Part Number	Model	Screw Description	Ultimate Pullout (lbs)	UL Test Load (lbs)	FM Test Load (lbs)	Max. Deflection	Box Qty	Case Qty	Nut Driver
	3/8"	8139957	SH-GST 20	1/4 x 2"	1257 (Fir)	1050	1475	17°	25	125	#14 Black Part # 8113910
	3/8"	8269957	SH-GST/CST 20	5/16 x 1-3/4"	1903 Dim. Lumber 1406 @ 45° off vertical Dim. Lumber	1500 850 @ 45°		89°	25	125	#14 SH Orange Part # 8273910

*May require pre-drilling; consult joist manufacturer / **Will not swivel until installed with black nut driver



SAMMYS FOR STEEL – Vertical Application



PRODUCT FEATURES

- Made with TekS® self-drilling fasteners — no pre-drilling required
- Installs into steel range from 20 gauge - 1/2" thickness
- Saves time from traditional methods
- Reduces installation costs
- Quick to install using the Sammys Nut Driver with an 18V cordless drill/driver
- A standard screwgun with a depth sensitive nosepiece should be used to install TekS. For optimal fastener performance, the screwgun should be a minimum of 6 amps and have an RPM range of 0-2500 for TekS 3 and 1-1800 for TekS 5.
- Assembled in the U.S.A.



View our installation videos:
www.sammysanchors.com/install

VERTICAL MOUNT

Approvals	Rod Size	Part Number	Model	Screw Description	Ultimate Pullout (lbs)	UL Test Load (lbs)	FM Test Load (lbs)	Min. Thick	Max. Thick	Box Qty	Case Qty	Nut Driver
	1/4"	8024957	DSTR 100 *	1/4-20 x 1" TEKS 3	1510 (20 ga.)			.036"-20 ga	3/16"	25	125	#14 Black Part # 8113910
	1/4"	8025957	DST 100	1/4-14 x 1" TEKS 3	446 (20 ga.)			.036"-20 ga	3/16"	25	125	#14 Black Part # 8113910
	1/4"	8026957	DST 150	1/4-14 x 1-1/2" TEKS 3	970 (16 ga.)			.036"-20 ga	3/16"	25	125	#14 Black Part # 8113910
	1/4"	8027957	DST 200	1/4-14 x 2" TEKS 3	446 (20 ga.)			.036"-20 ga	3/16"	25	125	#14 Black Part # 8113910
	3/8"	8038957	DSTR 1 *	1/4-20 x 1" TEKS 3	1510 (20 ga.)	1500	1475	.036"-20 ga	3/16"	25	125	#14 Black Part # 8113910
	3/8"	8037957	DSTR 1-1/2 *	12-24 x 1-1/2" TEKS 5	1510 (3/16")	1500	1475	.036" - 20 ga	1/2"	25	125	#14 Black Part # 8113910
	3/8"	8039957	DSTR 516 *	5/16-18 x 1-1/4" TEKS 3	2200 (20 ga.)	1500	1475	.036"-20 ga	3/16"	25	125	#14 Black Part # 8113910
	3/8"	8040957	DST 10	1/4-14 x 1" TEKS 3	446 (20 ga.) 970 (16 ga.)			.036"-20 ga	3/16"	25	125	#14 Black Part # 8113910
	3/8"	8041957	DST 15	1/4-14 x 1-1/2" TEKS 3	446 (20 ga.) 970 (16 ga.)			.036"-20 ga	3/16"	25	125	#14 Black Part # 8113910
	3/8"	8042957	DST 20	1/4 - 14 x 2" TEKS 3	446 (20 ga.) 970 (16 ga.)			.036"-20 ga.	3/16"	25	125	#14 Black Part # 8113910
	3/8"	8044957	DST 30	1/4-14 x 3" TEKS 3	446 (20 ga.) 970 (16 ga.)			.036"-20 ga	3/16"	25	125	#14 Black Part # 8113910
	3/8"	8045957	DST 516	5/16-18 x 1-1/4" TEKS 3	1500 (3/16")	1500	1475	.125"-1/8"	3/16"	25	125	#14 Black Part # 8113910
	3/8"	8046957	TEK 50	12-24 x 1-1/2" TEKS 5	3125 (3/16")	1500	1475	.250"-1/4"	1/2"	25	125	#14 Black Part # 8113910
	1/2"	8031925	DST 2.0	1/4-14 x 2" TEKS 3	446 (20 ga.) 970 (16 ga.)			.036" - 20 ga.	3/16"	25	125	#14 Black Part # 8113910

*Includes retaining nut

SAMMYS NUT DRIVERS



#14 Black Nut Driver
Part # 8113910



#14 SW Red Nut Driver
Part # 8114910



#14 SH Orange Nut Driver
Part # 8273910

SPECIAL NUT DRIVER SYSTEM: The nut drivers were designed with a unique spin-off feature which provides a fast and safe installation each time. When the face of the driver comes into contact with the material you are installing into, continue drilling until nut driver spins free. Installation is then complete. Warranty requires the use of the appropriate nut driver for installations.



SIDEWINDER® FOR STEEL – Horizontal Application



PRODUCT FEATURES

- Made with Teks® self-drilling fasteners - no pre-drilling required.
- Installs into steel range from 20 gauge – 1/2" thicknesses.
- A standard screwgun with a depth sensitive nosepiece should be used to install Teks. For optimal fastener performance, the screwgun should be a minimum of 6 amps and have an RPM range of 0-2500 for Teks 3 and 1-1800 for Teks 5.
- Saves time from traditional methods.
- Reduces installation costs.
- Quick to install using the Sammys Nut Driver with an 18V cordless drill/driver.
- Assembled in the U.S.A.



View our installation videos:
www.sammysanchors.com/install



HORIZONTAL MOUNT

Approvals	Rod Size	Part Number	Model	Screw Description	Ultimate Shear (lbs)	UL Test Load (lbs)	FM Test Load (lbs)	Min. Thick	Max. Thick	Box Qty	Case Qty	Nut Driver
	3/8"	8050957	SWD 10	1/4-14 x 1" TEKS 3	1477 (16 ga.)			.060"-16 ga	3/16"	25	125	#14 SW Red Part # 8114910
	3/8"	8052957	SWD 20	1/4-14 x 2" TEKS 3	1477 (16 ga.)			.060"-16 ga	3/16"	25	125	#14 SW Red Part # 8114910
	3/8"	8055957	SWDR 1 *	1/4-20 x 1" TEKS 3	1900 (20 ga.)	1500	1475	.036"-20 ga	3/16"	25	125	#14 SW Red Part # 8114910
	3/8"	8054957	SWDR 1-1/2 *	12-24 x 1-1/2" TEKS 5	2375 (3/16")	1500	1475	.188"-3/16"	1/2"	25	125	#14 SW Red Part # 8114910
	3/8"	8056957	SWDR 516 *	5/16-18 x 1-1/4" TEKS 3	2480 (20 ga.)	1500	1475	.036"-20 ga	3/16"	25	125	#14 SW Red Part # 8114910

*Includes retaining nut

SAMMYS SWIVEL HEAD™ FOR STEEL – Swivel Application

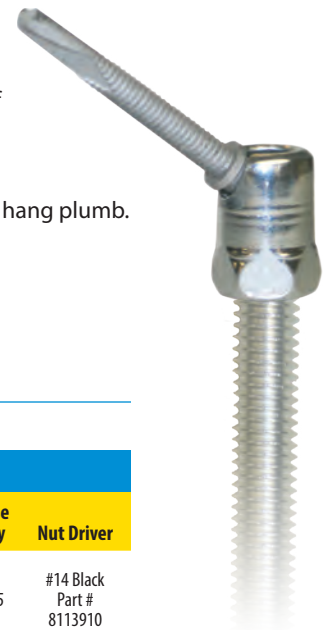


PRODUCT FEATURES

- Eliminates distortion of threaded rod in sloped roof applications.
- Accommodates 3-1/2 x 12 pitch.
- Installs into angled z-purlin; allows threaded rod to hang plumb.
- Allows 17° deflection from vertical.
- Assembled in the U.S.A.



View our installation videos:
www.sammysanchors.com/install



SWIVEL MOUNT

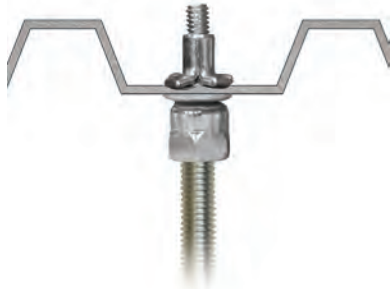
Approvals	Rod Size	Part Number	Model	Screw Description	Ultimate Pullout (lbs)	UL Test Load (lbs)	FM Test Load (lbs)	Min. Thick	Max. Thick	Box Qty	Case Qty	Nut Driver
	3/8"	8137957	SH-DSTR 1 *	1/4-20 x 1" TEKS 3	3220 (3/16")	1500	1475	.036"	3/16"	25	125	#14 Black Part # 8113910
	3/8"	8268957	SH-TEK 50	12-24 x 1-5/8" TEKS 5	2368 (1/2" steel vertical) 1306 (45° off vertical) 2281 (3/16" HSS) 1585 (3/16" HSS 45° off vertical)	1500 (vertical) 4" 850 (45° off vertical) 2-1/2"		3/16"	1/2"	25	125	#14 SH Orange Part # 8273910

* Does not comply with ROHS requirements / Includes retaining nut

To find a distributor near you, call 800-848-5611



SAMMY X-PRESS® – Vertical Application



PRODUCT FEATURES

- The Sammy X-Press expands to provide direct vertical attachment in:
 - light gauge steel deck or purlin (22 ga – 1/8").
- Installs in seconds with Sammy X-Press It® Tool, saving time & installation costs.
- Use in applications where access to the back of the installed fastener is prohibited, ie. metal roof deck, tubular steel, or vapor barrier fabric.
- Less jobsite material needed.
- No retaining nut required.
- Provides design flexibility.
- Assembled in the U.S.A.



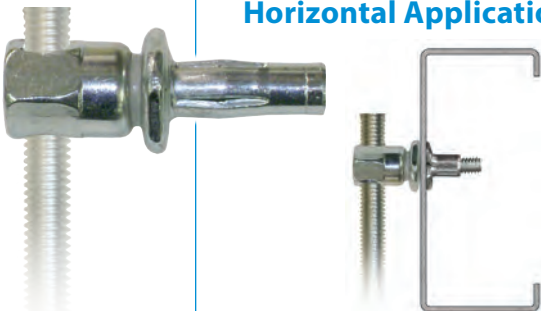
View our installation videos:
www.sammysanchors.com/install

VERTICAL MOUNT

Approvals	Rod Size	Part Number	Model	Description	Ultimate Pullout (lbs)	UL Test Load (lbs)	UL Min Thick	FM Test Load (lbs)	FM Min Thick	Max. Thick	Box Qty	Case Qty	Application
	1/4"	8181922	XP 200	Sammy X-Press 200	1146 (22 ga)	185 (Luminaire) 250 (Luminaire)	.027"			.125"	25	125	Metal Deck
	3/8"	8150922	XP 20	Sammy X-Press 20	1146 (22 ga)	850 (2½" Pipe) 185 (Luminaire) 250 (Luminaire) 283 (Conduit & Cable)	.027" .027" .060" .030"	940 (2" Pipe) 1475 (4" Pipe)	.029" .104"	.125"	25	125	Metal Deck
	3/8"	8150922	XP 20	Sammy X-Press 20	1146 (22 ga)	850 (2½" Pipe)		Pre-Pour Structural Concrete @ 3000 psi Post-Pour Range II LWC ≤ 35 PCF (lbs/ft³)			25	125	Metal Deck (Pre-Pour) Metal Deck (Post-Pour)
	3/8"	8153922	XP 35	Sammy X-Press 35	1783 (16 ga)	1500 (4" Pipe) 185 (Luminaire) 250 (Luminaire) 416 (Conduit & Cable)	.060" .030" .060" .060"	940 (2" Pipe) 1475 (4" Pipe)	.029" .104"	.125"	25	125	Purlin



SAMMY X-PRESS SIDEWINDER™ – Horizontal Application



PRODUCT FEATURES

- The Sammy X-Press Sidewinder expands to provide horizontal attachment in:
 - 16 ga - 3/16" steel - purlin, tubular steel
- Installs in seconds with Sammy X-Press It® Tool, saving time & installation costs.
- Use in applications where access to the back of the installed fastener is prohibited; ie. metal roof deck, tubular steel, or vapor barrier fabric.
- Less jobsite material needed.
- No retaining nut required.
- Provides design flexibility.
- Assembled in the U.S.A.



View our installation videos:
www.sammysanchors.com/install

HORIZONTAL MOUNT

Approvals	Rod Size	Part Number	Model	Description	Ultimate Shear (lbs)	UL Test Load (lbs)	UL Min Thick	Max. Thick	Box Qty	Case Qty	Application
	3/8"	8293957	SWXP35	Sidewinder X-Press 35	1798 (16 ga)	1250 (3½" Pipe) 80 (Luminaire) 416 (Conduit & Cable)	.060"	.125"	25	125	Metal Deck/Purlin

SAMMY X-PRESS SWIVEL – Swivel Application



PRODUCT FEATURES

- The Sammy X-Press Swivel allows you to hang plumb in extreme roof pitches:
 - 89° in z-purlin
 - 45° in metal deck for 12/12 pitch
- Installs in seconds with Sammy X-Press It® Tool, saving time & installation costs.
- Use in applications where access to the back of the installed fastener is prohibited, ie. metal roof deck, tubular steel, or vapor barrier fabric.
- Less jobsite material needed.
- No retaining nut required.
- Provides design flexibility.
- Assembled in the U.S.A.



View our installation videos:
www.sammysanchors.com/install

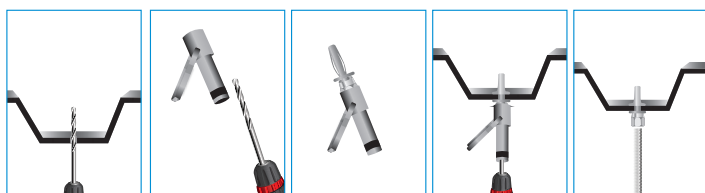


SWIVEL MOUNT

Approvals	Rod Size	Part Number	Model	Description	Ultimate Pullout (lbs)	UL Test Load (lbs)	UL Min Thick	FM Test Load (lbs)	FM Min Thick	Max. Thick	Box Qty	Case Qty	Application
	3/8"	8294922	SXP 20	Swivel X-Press 20	1061 (22 ga Vert) 829 (45° Off Vert)	750 (2" Pipe)	.029	635 (2" Pipe)	.029"	.125"	25	125	Metal Deck/Purlin
						170 Vertical (Luminaire) 80 @ 45° (Luminaire) 283 Vertical (Conduit & Cable) 233 @ 45° (Conduit & Cable)							
	3/8"	8295922	SXP 35	Swivel X-Press 35	1675 (16 ga Vert) 1558 (89° Off Vert)	1250 (3½" Pipe)	.059	635 (2" Pipe)	0.29"	.125"	25	125	Metal Deck/Purlin
						250 Vertical (Luminaire) 80 @ 90° (Luminaire) 500 Vertical (Conduit & Cable) 333 @ 89° (Conduit & Cable)							
†	1/2"	8272957	SXP 2.0	Swivel X-Press 2.0	1061 (22 ga Vert) 829 (45° Off Vert)					.125"	25	125	Metal Deck/Purlin
†	1/2"	8271957	SXP 3.5	Swivel X-Press 3.5	1675 (16 ga Vert) 1558 (89° Off Vert)					.125"	25	125	Metal Deck/Purlin

† Approved for Sway Bar Bracing Only

SAMMY X-PRESS IT® INSTALLATION TOOL – Application



PRODUCT FEATURES

- The Sammy X-Press expands to provide direct vertical attachment in:
 - metal deck (22-16 ga)
 - z-purlin (18-16 ga)
- Assembled in the U.S.A.



View our installation videos:
www.sammysanchors.com/install



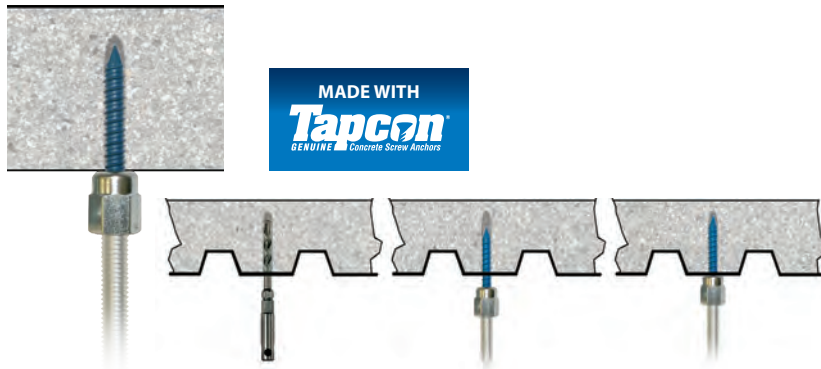
SAMMY X-PRESS IT®

Part Number	Model	Description	Qty
8194910	UXPIT*	Universal X-Press It Tool	1
8152910	XPDB	25/64" Drill Bit	1

* Tool includes: Sleeve, Bit Receiver, Hex Wrench, and 25/64" Drill Bit



SAMMYS FOR CONCRETE – Vertical Application



PRODUCT FEATURES

- Easy two step process (Drill hole & drive Sammys concrete anchor).
- ¼" pre-drilled pilot hole required.
- Concrete Installation Tool available for a one tool installation process.
- Assembled in the U.S.A.



View our installation videos:
www.sammysanchors.com/install

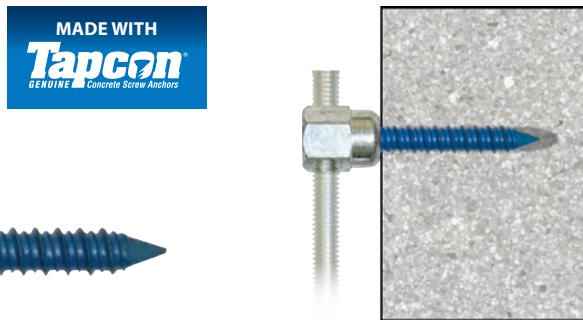
VERTICAL MOUNT

Approvals	Rod Size	Part Number	Model	Screw Description	Ultimate Pullout (lbs)*	FM Test Load (lbs)	Box Qty	Case Qty	Nut Driver
	1/4"	8058957	CST 200	5/16 x 1-3/4"	2400		25	125	#14 Black Part # 8113910
	3/8"	8059957	CST 20	5/16 x 1-3/4"	2400	1475	25	125	#14 Black Part # 8113910
	1/2"	8060925	CST 2	5/16 x 1-3/4"	2400		25	125	#14 SW Red Part # 8114910

*Tested in 3000 PSI concrete

For complete performance data see ICC Report ESR-3699

SIDEWINDER® FOR CONCRETE – Horizontal Application



PRODUCT FEATURES

- Easy two step process (Drill hole & drive Sammys concrete anchor).
- ¼" pre-drilled pilot hole required.
- Concrete Installation Tool available for a one tool installation process.
- Assembled in the U.S.A.



View our installation videos:
www.sammysanchors.com/install

HORIZONTAL MOUNT

Approvals	Rod Size	Part Number	Model	Screw Description	Ultimate Shear (lbs)*	FM Test Load (lbs)	Box Qty	Case Qty	Nut Driver
	3/8"	8061957	SWC 20	5/16 x 1-3/4"	2450	1475	25	125	#14 SW Red Part # 8114910

*Tested in 3000 PSI concrete

SAMMYS NUT DRIVERS



#14 Black Nut Driver
Part # 8113910

#14 SW Red Nut Driver
Part # 8114910

#14 SH Orange Nut Driver
Part # 8273910

SPECIAL NUT DRIVER SYSTEM: The nut drivers were designed with a unique spin-off feature which provides a fast and safe installation each time. When the face of the driver comes into contact with the material you are installing into, continue drilling until nut driver spins free. Installation is then complete. Warranty requires the use of the appropriate nut driver for installations.



SAMMYS FOR CONCRETE – Swivel Application

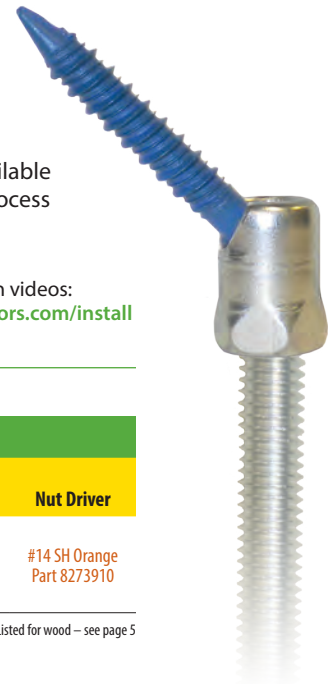


PRODUCT FEATURES

- Installs vertically and swivels up to 89° in wood & concrete structures
- Eliminates distortion of threaded rod
- 1/4" pre-drilled pilot hole required
- Concrete installation tool available for a one piece installation process
- Assembled in the U.S.A.



View our installation videos:
www.sammysanchors.com/install



SWIVEL MOUNT

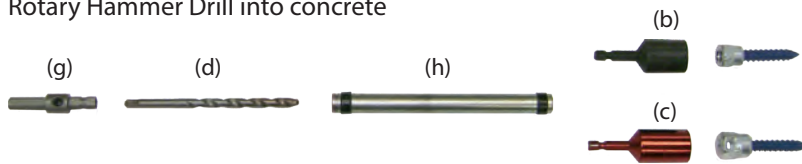
Approvals	Rod Size	Part Number	Model	Screw Description	Ultimate Pullout (lbs)*	Box Qty	Case Qty	Nut Driver
	3/8"	8269957	SH-GST/CST 20	5/16 x 1-3/4"	2537 in 3000 psi concrete 1459 @ 45° off vertical in 3000 psi concrete 2852 in 6000 psi concrete 1636 @ 45° off vertical in 6000 psi concrete	25	125	#14 SH Orange Part 8273910

* Tested in 3000 PSI concrete

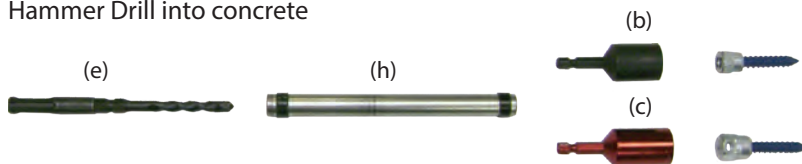
Note: UL Listed for wood – see page 5

CONCRETE / WOOD INSTALLATION KIT

Rotary Hammer Drill into concrete



Hammer Drill into concrete



CONCRETE INSTALLATION KIT

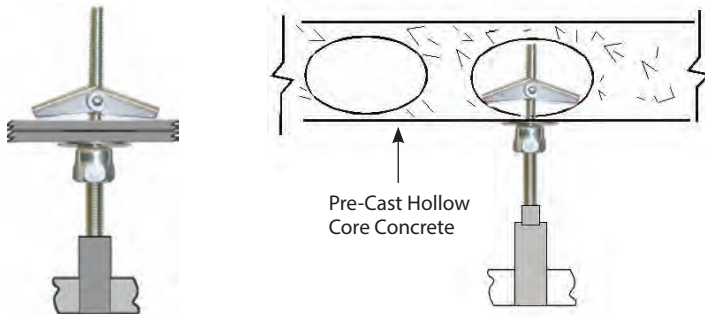
Part Number	Description	Each Qty
8122910	(a) Concrete Installation Kit – Kit includes the following items:	1
8113910	(b) #14 Black Nut Driver	1
8114910	(c) #14 SW Red Nut Driver	1
8116910*	(d) #250 Bit (1/4")	1
8117910	(e) SDS Bit (1/4")	1
8118910*	(f) 7/32 Wood Bit	1
8120910*	(g) HEX 250 Bit Receiver (1/4")	1
8098910*	(h) SL 250 Sleeve	1

* Can only be purchased with complete kit





SAMMYS TOGGLE™ – Application

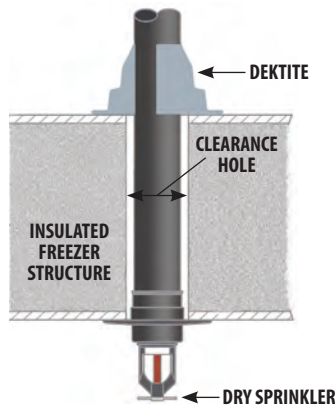


INSTALLATION STEPS

1. Pre-drill a 5/8" hole with a regular drill or hole saw.
2. Insert SST screw into #14 black nut driver. With wing nut and washer on bolt, insert wing nut through surface, and begin installation.
3. When bolt is secure and nut driver spins free, stop drill motor and remove.

Rod Size	Part Number	Model	Screw Description	Ultimate Pullout (lbs)	Box Qty	Case Qty	Nut Driver
3/8"	8064925	SST 30	1/4 x 3"	450 (Lath & Plaster) 404 (2 Layers 5/8 Drywall)	25	125	#14 Black Part # 8113910

DEKTITE® PIPE FLASHING – Application



STAY UP TO CODE!
with a quicker, more efficient way to flash your refrigeration/freezer units.

PRODUCT FEATURES

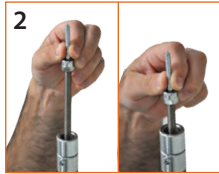
- Complies with NFPA 13 Code Changes.
- Flashing for dry pendant sprinklers subject to extreme temperature change.
- One piece construction is easy to install.
- Pipe diameter markings ensure accurate fit.
- EPDM temperature range of -65°F to +250°F.

Part Number	Description	Pipe Outside Diameter	Dektite Base Diameter	Dektite Height	Box Qty
4003910	1	1/4" - 2"	4-3/4"	3"	10
4004910	2	1-3/4" - 3-1/4"	6-1/4"	4"	10

**SAMMYS POLE TOOL™ –
Installation Instructions**



1
Adjust the Pole Tool to length. The adjusting pin must be 18" below the base or the pin may interfere with the rod.



2
Load rod and Sammys into Pole Tool.



3
The socket will spin free when the screw is completely installed. Pull down to remove the Pole Tool.

PRODUCT FEATURES

- Speed your labor by 25%.
- Work from the ground up.
- No scaffolding, ladders, or lifts.
- Perfect for working in tight spaces, through ceiling grid, and high vaulted ceilings.
- Works with any Vertical SAMMYS: Wood, Steel or Concrete.



Part Number	Description	Box Qty
SP6	Speedy Pole 6'-18'	1

Part Number	Model	Rod Size	Mount Direction	UL Max Pipe Size	UL Test Load (lbs)	UL Min Thickness	FM Max Pipe Size	FM Test Load (lbs)	FM Min Thickness
SAMMYS FOR WOOD – PIPE HANGER						Min Wood Thickness		Min Wood Thickness	
8007957	GST 10	3/8"	Vertical	CPVC 1-1/2"	300	1-1/2"			
8020957	SWG 10	3/8"	Horizontal	CPVC 1-1/2"	300	1-1/2"			
8008957	GST 20	3/8"	Vertical	2-1/2"	850	1-1/2"	4"	1475	1-1/2"
8068925	GST 20-SS	3/8"	Vertical	2-1/2"	850	1-1/2"			
8010957	GST 30	3/8"	Vertical	4"	1500	1-1/2"	4"	1475	1-1/2"
8009925	GST 25-380	3/8"	Vertical	4"	1500	1-1/2"			
8022925	SWG 25-380	3/8"	Horizontal	3-1/2" - 4"*	1500	1-1/2"			
8021957	SWG 20	3/8"	Horizontal	2-1/2" - 3"***	1050	1-1/2"			
8073925	SWG 20-SS	3/8"	Horizontal	2-1/2"	850	1-1/2"			
8269957	SH-GST/CST 20	3/8"	45° Angle off Vertical	2-1/2"	850	1-1/2"			
8269957	SH-GST/CST 20	3/8"	45° Angle off Vertical	4"	1500	1-1/2"			
8139957	SH-GST 20	3/8"	17° Angle Off Vertical	3"	1050	1-1/2"	4"	1475	1-1/2"
SAMMYS FOR STEEL – PIPE HANGER						Min Steel Thickness		Min Steel Thickness	
8038957	DSTR 1	3/8"	Vertical	4"	1500	.035"	4"	1475	.105"
8037957	DSTR 1-1/2	3/8"	Vertical	4"	1500	.035"	4"	1475	.105"
8039957	DSTR 516	3/8"	Vertical	4"	1500	.037"	4"	1475	.105"
8045957	DST 516	3/8"	Vertical	4"	1500	.188"	4"	1475	.188"
8046957	TEK 50	3/8"	Vertical	4"	1500	.250"	4"	1475	.188"
8055957	SWDR 1	3/8"	Horizontal	4"	1500	.037"	4"	1475	.060"
8056957	SWDR 516	3/8"	Horizontal	4"	1500	.037"	4"	1475	.060"
8054957	SWDR 1-1/2	3/8"	Horizontal	4"	1500	.037"	4"	1475	.060"
8137957	SH-DSTR 1	3/8"	17° Angle off Vertical	4"	1500	.035"	4"	1475	.105"
8268957	SH-TEK 50	3/8"	Vertical 70° Angle off Vertical	2-1/2" 4"	850 1500				
8150922	XP 20	3/8"	Vertical	2-1/2"	850	.027"	2" 4"	940 1475	.029" .105"
8153922	XP 35	3/8"	Vertical	4"	1500	.060"	2" 4"	940 1475	.029" .125"
8294922	SXP 20	3/8"	Vertical or up to 45°	2"	750	.027"	2"	635	.029"
8295922	SXP 35	3/8"	Vertical or up to 89°	3-1/2"	1250	.060"	2"	635	.029"
8293957	SWXP 35	3/8"	Horizontal	3-1/2"	1250	.060"			
SAMMYS FOR CONCRETE – PIPE HANGER									
8059957	CST 20	3/8"	Vertical				4"	1475	3000psi
8061957	SWC 20	3/8"	Horizontal				4"	1475	3000psi
8150922	XP 20	3/8"	Vertical	2-1/2"	850	Pre-Pour Structural @ 3000psi			
8150922	XP 20	3/8"	Vertical	2-1/2"	850	Post-Pour Range II LWC ≤ 35 PCF (lbs/ft³)			
Part Number	Model	Rod Size	Mount Direction	UL Load Rating (lbs)	UL Min Steel Thickness				
SAMMYS FOR STEEL – LUMINAIRE FITTING									
8150922	XP 20	3/8"	Vertical	185 250	.027" .035"				
8153922	XP 35	3/8"	Vertical	185 250	.027" .035"				
8181922	XP 200	1/4"	Vertical	185 250	.027" .035"				
8294922	SXP 20	3/8"	Vertical 45°	170 80	.027" .027"				
8295922	SXP 35	3/8"	Vertical 90°	250 80	.060" .060"				
8293957	SWXP 35	3/8"	Horizontal	80	.060"				
Part Number	Model	Rod Size	Mount Direction	UL Load Rating (lbs)	UL Min Steel Thickness	Listed Application			
SAMMYS FOR STEEL – CONDUIT, TUBING, AND CABLE									
8150922	XP 20	3/8"	Vertical	283	.027"	Max 4 trade size EMT, RMC, and IMC & 5 trade size rigid PVC conduit			
8153922	XP 35	3/8"	Vertical	500	.060"	Max 4 trade size EMT & 6 trade size RMC, IMC, and rigid PVC conduit			
8294922	SXP 20	3/8"	Vertical	283	.027"	Max 4 trade size EMT, RMC, and IMC & 5 trade size rigid PVC conduit			
8295922	SXP 35	3/8"	Vertical	500	.060"	Max 4 trade size EMT & 6 trade size RMC, IMC, and rigid PVC conduit			
8293957	SWXP 35	3/8"	Horizontal	500	.060"	Max 4 trade size EMT & 6 trade size RMC, IMC, and rigid PVC conduit			
8149957	CZ2000	1/4" or 3/8"	Onto Vertical Rod			UL Listed 4516 - Cable Hanger, Cat. No. C-Z2000 Plenum Rated, Complies w/ NEC Standards			
SHEET STEEL GAUGES									
Gauge No.	22 ga	20 ga	18 ga	16 ga	14 ga	12 ga	1/8"	3/16"	1/4"
Nominal Decimal Equivalent	.030"	.036"	.048"	.060"	.075"	.105"	.125"	.188"	.25"

* SWG 25-380 Maximum pipe size in composite wood joist allowed by UL is 3-1/2"

* SWG 25-380 Maximum pipe size in wood timber or joist allowed by UL is 4"

** SWG 20 Maximum pipe size in composite wood joist allowed by UL is 2-1/2"

** SWG 20 Maximum pipe size in wood timber or joist allowed by UL is 3"

UL compliance with NEC Standards.

UL and FM tests were performed in compliance with NFPA 13 Standards.

Fastening requirement: 5 times weight of water-filled schedule 40 pipe plus 250 pounds

ENGINEERING NOTE

The anchors listed by UL were tested in plate steel that measured .188" and .118". Subsequent testing was done for z-purlin applications using (.037") or 20 gauge steel. Testing with the new Sammy X-Press® was completed using (.030") or 22 gauge steel metal deck.

SAMMYS® NUT DRIVERS

Special nut drivers were designed to be used with Sammys. When the appropriate nut drivers are used for installation, the driver spins freely on the screw after installation is complete and eliminates the expected wrist snap, reduces over-torque, and prevents screw failure.

STEEL SCREWS

Due to variations in hardness of certain metals, it should be noted that our self-drilling screws for steel will experience different drill speeds, with an RPM range of 0-2500 for Teks 3 and 1-1800 for Teks 5.

VIBRATORY ENVIRONMENTS



For attaching or anchoring in high vibratory environments, special care should be taken not just for building attachments but also for the hangers or assemblies being supported. Consult local code authorities for accepted anchoring devices.

COMPOSITE JOIST/TRUSS

Truss manufacturers vary installation recommendations for composite joist. UL testing was completed to validate that Sammys and Sidewinders SWG 20 and SWG 25-380 can be installed into the top cord of a truss. Sammy GST 20 can be installed into the center of the lower cord of a composite joist. Penetration of the upright center web is permitted by some joist manufacturers. Consult truss manufacturer for recommended installation point.

Pre-drilling may be required by joist manufacturers. If so, pre-drill pilot hole 1/8" smaller than root diameter of fastener.

Consult the table below:

Part Number	Root Diameter	Hole Size
GST 20	.182"	1/8"
GST 25-380	.280"	7/32"
SWG 20	.182"	1/8"
SWG 25-380	.280"	7/32"

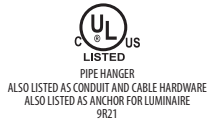
To increase efficiency of the installation process, sleeve tools, bit receivers, and wood bits are available for pre-drilling.

NFPA/NEC STANDARDS

All UL and FM testing complies with NFPA 13 and NEC standards. Check with your local (AHJ) Authority Having Jurisdiction to confirm application and usage.

UL LISTINGS / FM APPROVALS

UL and FM reports are available at www.itwbuildex.com



TECHNICAL DRAWINGS

Technical drawings are available and can be downloaded at www.itwbuildex.com in the following formats: .dwg, .dxf, and .igs.

ASSEMBLED IN THE U.S.A.



CONTACT INFORMATION

Technical Assistance: (800) 848-5611 Option #2
 Customer Service: (800) 848-5611 Option #1

SAMMYS[®]

NATIONAL HEADQUARTERS

ITW COMMERCIAL CONSTRUCTION,
NORTH AMERICA
155 HARLEM AVE,
GLENVIEW IL 60025
PHONE: 800-848-5611
FAX: 630-893-1270

TECHNICAL SUPPORT

PHONE: 800-848-5611
HOURS: 8:30 A.M. - 5:00 P.M. (CST, M-F)
EMAIL: TECHSUPPORT@ITWCCNA.COM

WILL CALL/DISTRIBUTION

2501 GALVIN DR
ELGIN, IL 60123
PHONE: 800-848-5611

CUSTOMER SERVICE

PHONE: 800-848-5611
HOURS: 7:30 A.M. - 5:00 P.M. (CST, M-F)
EMAIL: ORDERS@ITWCCNA.COM

www.itwbuildex.com